

Nue skin scrubber + sonic wave machine professional equipment



**MADE IN
U.S.A.**

MEET TUSHAR SHAH

owner & founder of Skin for Life

Our Promise to You

We are dedicated to providing reliable, affordable, and results-oriented professional equipment. Since 2003, we have been providing superior equipment such as: microdermabrasion, microcurrent, oxygen infusion, nue skin scrubber + sonic wave and LED light therapy along with performance professional skin care.

Our parent company Lifeline Medical, Inc. has been in business since 1991. A strong commitment to customer service has contributed to our success. I, as owner and President, pledge to continue this tradition and to make Skin for Life the premier customer service oriented company in this industry.

Our dedicated employees understand the importance of customer focus and we treat all our customers with integrity and respect. We realize that our ability to grow as a company is directly related to customer satisfaction and that you make the final choice when selecting a vendor.

We look forward to the opportunity to support your business with quality equipment, supplies and skin care. Thank you for giving us a chance to earn your trust.



Tushar Shah

President and Founder of Skin for Life

Nue Skin Scrubber + Sonic Wave Machine

Important Safety Information	1
Skin Beauty News	2
Treatments/Precautions/Contraindications	3
Machine Set up Instructions	4
Nue Skin Scrubber+ Sonic Wave Installation	5-6
Skin Scrubber Technique	7
Sonic Wave Technique	8
Warranty Policy	9
Warranty Guidelines	10
Consent Form Information	11
Procedure Information Consent	12
L.E.D. Light Therapy Information	13
LED Light Therapy Consent Form-Sample Only	14
Oxygen Infusion How Does It Work?	15
Oxygen Contraindications/Precautions	16
Oxygen Infusion Information/Application/Consultation	17
Oxygen Infusion Product & Accessories	18
Oxygen Infusion Maintenance Information	19
Oxygen Infusion Troubleshooting Guide	20
Professional Skin Care	21
Age Defying Skin Treatment	22-28
Simply Sensitive Skin Treatment	29-34
Oily-Troubled Skin Treatment	35-42
Photo-Aging Skin Treatment	43-48
Cost Per Treatment	49

NUE SKIN SCRUBBER + SONIC WAVE MACHINE



IMPORTANT SAFETY INSTRUCTIONS

Operation Safety Instructions -

- Read all instructions before use to avoid injury
- To avoid serious injury or death, follow safety information in this document
- Keep this manual for reference
- Read all product safety labels
- Refer to local building codes for installation requirements
- Always turn off machine when not in use

Safety Information:

All Electrical Devices for Prevention of Electrical Shock Exposure -

- Keep machine unplugged when setting up machine to prevent accidental injury
- Make sure machine is on a clean and dry surface area to prevent any accidental injury
- Prohibit water from seeping into the machine housing
- Avoid any water and/or liquids around the vicinity of the machine when in use or not in use to prevent any accidental injury
- Check the cord and plug for damage before use
- Pay attention to safety labels on machine before plugging the cord into an outlet
- Switch on the equipment only after plugging into an outlet. Always turn off the machine before unplugging the cord from the outlet
- Allow sufficient space for ventilation to prevent overheating
- Avoid placing the cord near any hot objects

NUE SKIN SCRUBBER + SONIC WAVE BEAUTY NEWS

Skin Scrubbers and Sonic Waves brought new skin treatment potential to the esthetic industry. Skin professionals started adding performance equipment like the skin scrubber machine into their skin treatment.

The skin scrubber decreases the thickness of the stratum corneum. This helps to lift pigmentation, reduce congestion and indirectly increase collagen. Sonic vibrations (waves) help to lift, hydrate and protect the skin's surface.

Skin scrubber lifts by exfoliating the surface of the skin and sonic wave attachments enhance product penetration to support skin health. The skin scrubber is fantastic for lifting dead skin cells without the friction or abrasion that may cause sensitivities to various skin conditions.

Skin scrubber is excellent for oily and troubled skin conditions. You may perform with Nue skin scrubber on mild, moderate or severe oily and acne skins. Sonic waves are designed to increase the depths of product penetration. It allows skin care professionals to indirectly affect deeper layers to encourage a healthier skin function. Mature and aging skins benefit from our Nue skin scrubber + sonic wave equipment. The treatment builds volume-fullness for a beautiful youthful complexion.

Sonic waves are excellent in conjunction with microdermabrasion, cosmetic acid peels, microcurrent, oxygen infusion skin care and many more combinations for clients/patients long-term healthy skin results.

How Many Treatments Are Needed?

The Nue skin scrubber + sonic waves is a progressive treatment, not aggressive. Although one treatment will give you a fresh, vibrant and smoother looking skin; four, five or even six treatments will give you longer lasting results.

Skin care professionals may schedule their clients/patients twice a week for 3 weeks for positive skin change. However, professionals may schedule clients once a month for skin treatments or as a maintenance treatment after an initial skin series.

Who Benefits?

All skin types and colors may benefit from Nue skin scrubber + sonic waves treatment after a thorough client consultation from a skin care professional. Certain areas of concern include: wrinkles, fine lines, pigmented areas, scars and other imperfections.

Nue skin scrubber + sonic waves machine is a wonderful tool that may be incorporated with all skin treatments. However, be aware of your client's and/or patient's skin limitations so you may build and manage the appropriate treatment protocol for their skin .

Precautions

- Do NOT use Nue skin scrubber + sonic waves hand pieces too close to the eyes
- Do NOT perform on the anterior of the throat (thyroid area)
- Chronic wounds - should be addressed by a dermatologist
- Do NOT use on damaged or high-risk skin
- Nerve sensitivity due to cosmetic procedures, for instances rhytidectomy (facelift). Skin care professionals may need to request a physician's approval

Contraindications

- Heart disease
- Pregnancy
- Pace maker
- Epilepsy
- Cancer
- Herpes Zoster Virus (shingles)
- Herpes Simplex Virus "HSV-1" - (cold sores and/or fever blisters)

NUE SKIN SCRUBBER + SONIC WAVES MACHINE

Set Up Instructions

Check Package for items listed below that come with your purchase:

□ (1) 1 MHZ Flat Sonic Wave Hand Piece	□ (1) 2 MHZ Cone Shaped Sonic Hand Piece
□ (1) Skin Scrubber Blade	□ (1) 8 oz. Bottle of Conductivity Gel
□ (1) Power Cord	
Skin for Life Professional Skin Care	
□ (1) Enzyme Exfoliant papaya complex + LSS™ delivery	
LED Light Therapy “Optional”	
□ (1) Large Red LED Light Hand Piece	□ (1) Large Blue LED Light Therapy Hand Piece
Oxygen Infusion Therapy “Optional”	
□ (1) Oxygen Infusion Gel A, C, E complex + LSS™ delivery phase 1	□ (1) Oxygen Airbrush Attachment
□ (1) Oxygen Infusion Gel brightening + LSS™ delivery phase 1	□ (1) 1 oz. Oxygen Cleaner
□ (1) Oxygen Infusion activator phase 2	
Additional Items	
□ (50) LED Light Rack Cards (with LED Light purchase)	□ (50) Oxygen Infusion Rack Cards (with Oxygen Infusion purchase)
□ (1) Operational Manual	□ (1 ea.) Price List & Order Form

NUE SKIN SCRUBBER + SONIC WAVES MACHINE

Machine Installation

Skin Scrubber - Insert the scrubber blade “plug” into the scrubber output portal located on the front side of the machine.

Time - 20 minutes default setting - maximum 60 minutes



INTENSITY -

I - LOW INTENSITY - Sensitive/allergic skin, problem skin, back, shoulders, hand or feet

II - MEDIUM INTENSITY - Normal skin, dry skin, mature skin, sun damaged skin, oily skin, blemished skin, congested follicles, back, shoulders, hands or feet

III - HIGH INTENSITY - Mature skin, sun damaged/photo aging skin, Grade I, II, III, IV acne skin, back, shoulders, hands or feet

MODE-

C - CONSTANT - Normal skin, congested oily skin, sun damaged/photo aging skin or acne skin

75% - Normal skin, oily skin, congested oily skin

50% - Normal skin, sun damaged/photo aging skin, problem skin or allergic skin (sensitive conditions)

SKIN TYPES & CONDITIONS	MODE	INTENSITY	TIME ALLOWED	SKIN CARE PRODUCT
NORMAL/COMBINATION SKIN	C, 75%, 50%	I,II	5 MINUTES	ENZYME EXFOLIANT PAPAYA COMPLEX
OILY/ CONGESTED OILY SKIN	C, 75%	II	10 MINUTES	
SUN DAMAGED/PHOTO AGING & ACNE CONDITIONS	C, 50%	II, III	10 MINUTES	
PROBLEM SKIN OR ALLERGIC SKIN/SENSITIVE SKIN CONDITIONS	50%	I	5 MINUTES	
BACK, SHOULDERS, HANDS AND/OR FEET	C, 75%, 50%	I,II, III	10 MINUTES	

NUE SKIN SCRUBBER + SONIC WAVES MACHINE

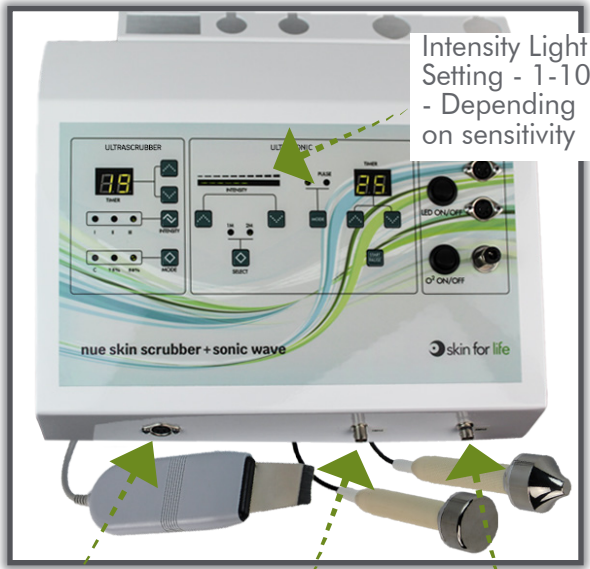
Machine Installation

Sonic Wave Hand Pieces -

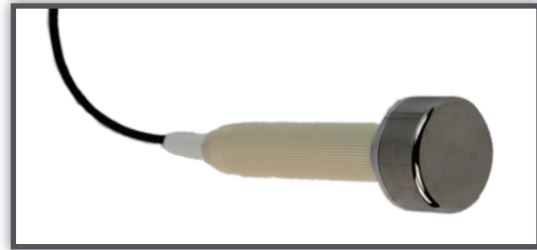
Flat Sonic Hand Piece - 1 MHz - has a turn lock plug in. Once you insert into the silver outlet marked 1 MHz turn to the right to lock.

Cone Shaped Sonic Hand Piece - 2 MHz - has a turn lock plug in. Once you insert into the silver outlet marked 2 MHz turn to the right and lock.

Time - 20 minutes default setting - maximum 60 minutes



Intensity Light Setting - 1-10 - Depending on sensitivity

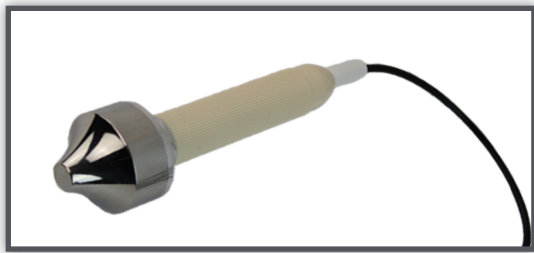


Flat Sonic Hand Piece 1 MHz - is for flat areas of the face. May perform with lifting and firming movements to increase skin volume and fullness.

Skin scrubber - 5 pin din plug in

Flat 1 MHz hand piece - insert and turn to the right to lock

Cone Shaped 2 MHz hand piece - insert and turn to the right to lock



Facial Contour - Wrinkles or Fine Lines	C - CONSTANT - Time Duration - 10 minutes Increase by 4-8 lights	PULSE - Time Duration - 10-20 minutes Intermittent wave Increase by 4-8 lights
Pigment Variation Photo Damage & Oily/Acne Skin	C - CONSTANT - Time Duration - 10 - 15 minutes Increase by 4-8 lights	PULSE - Time Duration - 10-20 minutes Intermittent wave Increase by 4-8 lights
Sensitive	N/A	PULSE - Time Duration - 8-10 minutes Intermittent wave Increase by 3-6 lights

Cone Shaped Hand Piece 2 MHz - is for the eye area and fine lines around the lips and mouth.

Eye Area	C - CONSTANT - Time Duration - 10 minutes Increase by 3-6 lights	N/A
-----------------	---	------------

Intensity Light Settings-

GREEN - Low Intensity (Sensitive Skins)

1-4 intensity

ORANGE - Medium Intensity

5-7 intensity

RED - High Intensity for targeted areas (ONLY)

8-10 intensity

©2019 all rights reserved

Skin for Life a division of Lifeline Medical, Inc.

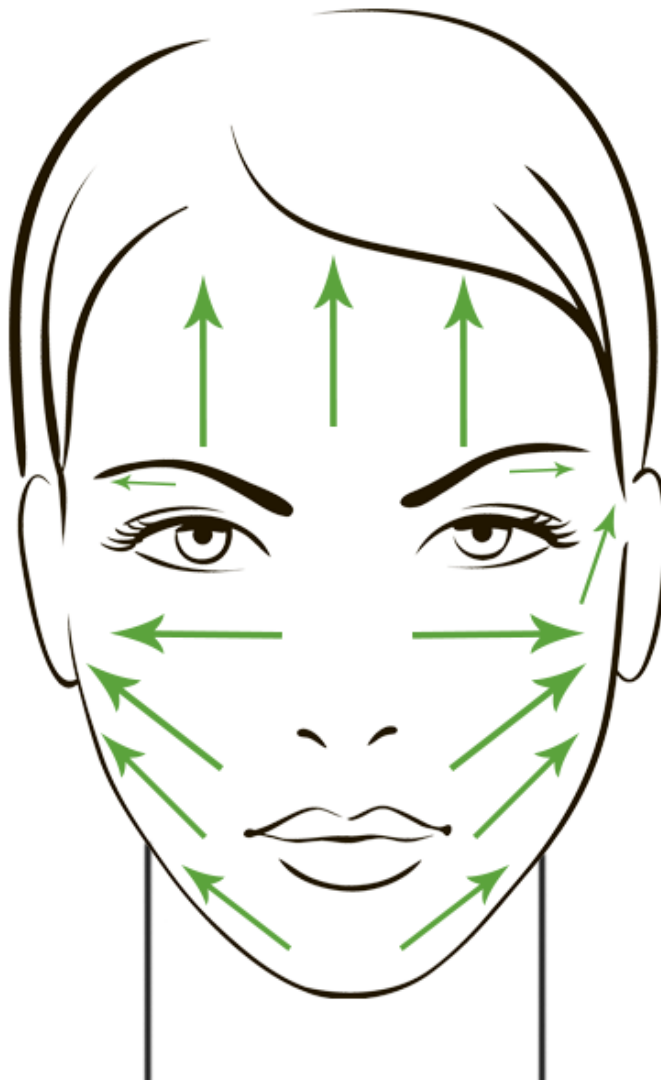
NUE SKIN SCRUBBER + SONIC WAVES MACHINE

Skin Scrubber Facial Technique

Skin Scrubber Blade – Review page 5 for recommended settings. Use the diagram for suggested technique.

Important Facts –

- Perform continuous movement. NEVER rest or stop movement when performing with skin scrubber
- Be careful when pressing down using the skin scrubber blade. Glide the skin scrubber blade gently without using pressure
- Skin must stay moist throughout the application. Skin for Life's Enzyme Exfoliant papaya complex + LSS™ delivery is highly recommended for optimum skin results



©2019 all rights reserved
Skin for Life a division of Lifeline Medical, Inc.

(866) 312.7546 F06142019 Rev. 1

NUE SKIN SCRUBBER + SONIC WAVES MACHINE

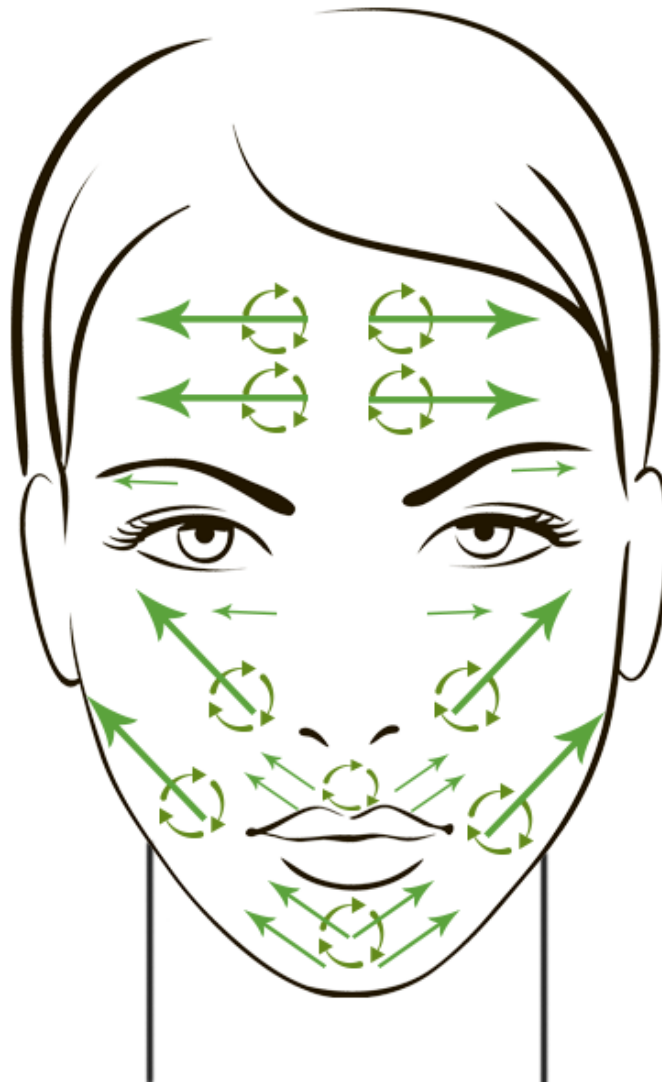
Sonic Wave Facial Technique

Flat Sonic Hand Piece - 1 MHz frequency is used for flat areas of the face. Use circular lifting movements. Follow the diagram to perfect technique.

Cone-Shaped Sonic Hand Piece - 2 MHz frequency is used around the eye area. May use around the lip line to soften fine lines and wrinkles.

Maximum Treatment Time - 15 minutes

Minimum Treatment Time - 8 minutes



NUE SKIN SCRUBBER + SONIC WAVES MACHINE

Warranty Policy

Warranty Agreement -

- Skin for Life warranties this product to be free of defects in material and workmanship for a period of two years from the date of original purchase. **(Initial User Only - non transferable)**
- Nue Skin Scrubber Blade and Sonic wave hand pieces have a **90-day warranty**

Responsibility of Original Purchaser -

- Retain Sales Receipt
- Keep Packaging (Box and Packing Material) for at least 2 years
- If machine requires off site service, contact Skin for Life authorized warranty service and technical center (866) 312.SKIN (7546)
- If equipment is brought back to Skin for Life under warranty and it is determined that lack of maintenance is the reason why equipment is compromised, customer will incur freight and repair costs

Training Support -

- Equipment Training is mandatory to avoid improper use of equipment and to avoid compromising your warranty
- Call Skin for Life at 866-312-7546 to schedule your initial training which may take place on-site or by web conference

Note*

Maintenance is enforced along with proper training so you may maintain an excellent working machine. Without proper maintenance and training you could possibly **VOID** your warranty.

NUE SKIN SCRUBBER + SONIC WAVES MACHINE

Warranty Guidelines

This Warranty Does Not Cover –

- Merchandise sold as demo units, reconditioned, floor models and/or display models
- Merchandise used as “Rental” equipment
- Merchandise that has become inoperative because of misuse, improper and/or unauthorized repair or alterations or failure to operate product in accordance with the instructions provided in the “General Operating Manual” and reiterated in the “Mandatory” training received on-site or by webinar
- Repair and transportation costs if equipment is determined not to be defective
- Any incidental, indirect, or consequential loss, damage or expense that may result from any defect, failure or malfunction of the products

Skin for Life Return Policy –

- All returns and/or credits are subject to approval by Skin for Life and **MUST** be made within **30 days of the original sale**
- If merchandise is returned after 30 days or without proper authorization then it is Skin for Life’s prerogative to **charge a 25% restocking fee**
- Customers incur all “Shipping Costs” for the return of equipment, supplies and/or skin care to Skin for Life
- Everything must be returned in original **“New”** condition
- Skin for Life only accepts unopened and untampered skin care product as a return. A **25% restocking fee may be applied**
- All accessories must be returned with equipment
- Once received, Skin for Life will evaluate the equipment and accessories. Once confirmed, credit will be issued to customer. **Credit Memo** will be emailed to customer for confirmation of the refunded amount

CONSENT FORM - Sample ONLY

First Name:	Last Name:
Date of Birth: / /	
Address:	
City:	State: Zip:
Preferred Contact Number:	
Emergency Contact:	Phone:
Referred By:	
1. What is the reason for your visit to-day? _____	
2. Are you under the care of a physician including dermatologist?	
3. Are you pregnant? _____ Are you planning to become pregnant? _____	
4. Do you smoke? _____	
5. Please circle the one that best describes your daily stress level? High Medium Low	
6. Do you have metal in your body? dental implants, pins, plates, stents, etc. Be specific -	
7. Do you have allergies?	
8. Please list ALL Medications - _____ _____	
9. Do you use any exfoliants? Retin-A, Tretinoic acid, glycolic acid, scrubs, vitamin A products Please specify _____	
10. Do you have or have you had the following: Please circle all that apply:	

Heart Problems	High Blood Pressure	Heart Stent	Mitral Valve Prolapse
Pace Maker	Epilepsy	Fibromyalgia	Lupus
Hepatitis B or C	Immune Disorder	Kidney Disorder	Diabetes
Rosacea	Acne	Skin Cancer	Herpes Zoster (shingles)
Cosmetic Surgery	Botox	Cosmetic Fillers	Asthma
Keloid	Cancer	Sinus Concerns	Fever Blisters

I understand the information I have given is to aid the skin therapist and is not a substitute for medical care. I understand these questions and I have answered them honestly.

Client Signature _____
Date _____

©2019 all rights reserved
Skin for Life a division of Lifeline Medical, Inc.

PROCEDURE INFORMATION CONSENT- Sample ONLY

Instructions -

- **Do not** wear contact lenses during treatment sessions - they may be placed back in after treatment
- **Do not** use glycolic, AHA's, or any retinol products 48 hours before or after treatment
- You must not be currently taking Accutane. No Accutane use for at least 8 months to 1 year
- No suntan beds for 2 weeks post treatment (recommend self tanners for a healthy lifestyle change)
- Apply SOL defense SPF 30 physical sunscreen after treatment and any time skin during sun exposure

Initial Required -

___ I have been thoroughly informed by professional therapist _____ of any complications to recommended procedure _____ and I understand there are no guarantees to procedures given by _____.

___ I am committed to following post treatment care given to me by professional therapist _____ to ensure the best possible result.

___ I have given all medical information to the best of my knowledge to _____ to prevent any contraindication to procedures.

Yes or No - I have had history of cold sores, fever blisters and or shingles.

Yes or No - I am using (Retin-A, Tretinoic acid, Differin, glycolic acid, Accutane (isotretinoin) or other vitamin A derivative topical creams and/or ointments.

___ I have not used any performance agents within the last 5-7 days, knowing that this is a contra indicator for having procedures performed.

___ I am committed to avoiding the sun and/or tanning facilities for the recommended time suggested by professional therapist _____.

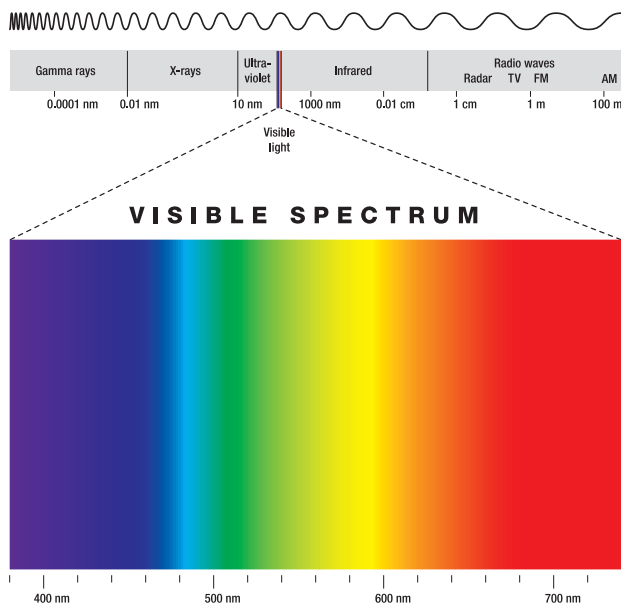
Client Signature _____ Date _____

Professional Signature _____ Date _____

LED LIGHT THERAPY

Information

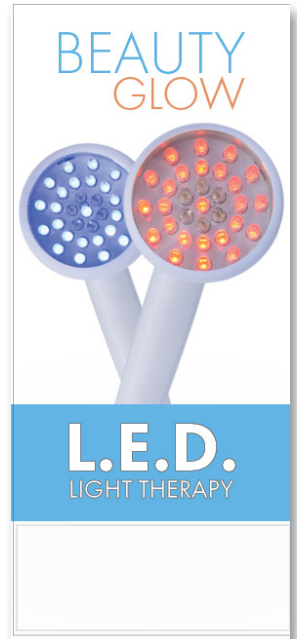
LED technology was originally developed to enhance the growth of plant tissue in space by NASA's Marshall Space Flight Center and Quantum Devices, Inc. of Barneveld, Wisconsin. LED's have a similar physiological effect on human cells as they do on plant cells. It is a natural photo - biochemical reaction that is similar to photosynthesis in plants, which triggers the body to convert light energy into cell energy.



**RED LIGHT
(680 nm)
Age Defying**

**BLUE LIGHT
(460 nm)
Oily - Acne Skin**

**INFRA-RED LIGHT
(800 nm)
Skin Rebuilding**



This remarkable technology enhances the ATP (adenosine triphosphate) within the mitochondria of the cells which excites the first process of cell division. This non thermal response relies on the visible light spectrum to interact with cells for a growth response.

RED LED Light is designed to trigger the first initial ATP (adenosine triphosphate) response.

RED LED light should always be the first light used on all skin types, conditions and colors.

Skin Indications- sun damaged skin, mature, pigmented lesions, oily, troubled skin, capillary distention and temporary/chronic sensitive skins.

How To Use - RED LED light hand piece - use 90 seconds per area with overlapping 30%-50%.

Approximately 4-5 passes to complete treatment.

BLUE LED Light is suggested for oily and troubled skin conditions. The depth of this light is important to minimize the activity of bacteria within the sebaceous gland that is associated with blemished skins.

Skin Indications - oily, troubled skin, blemished skin and seborrhea.

How To Use - BLUE LED light hand piece - use for 90 seconds per area with overlapping 30% - 50%. Approximately 4-5 passes to complete treatment.

©2019 all rights reserved
Skin for Life a division of Lifeline Medical, Inc.

LED LIGHT THERAPY – Procedure Information Consent

The purpose of the LED light therapy study from NASA was to discover the properties of wound healing. Increasing cellular growth encourages cell division which provides skin with a youthful healthy appearance. LED light therapy also assists with minimizing overactive oily and/or troubled skin conditions.

Ideal Results –

Schedule twice a week for three weeks which equals (6) skin treatments.

Maintenance Treatments –

Depends on individual goals. Once a week, twice a month or once a month is recommended to sustain cumulative results.

LED Light Therapy Contraindication –

- Epilepsy • Thyroid Conditions • Pregnancy • **Do Not** apply to an open wound

Precautions to Consider –

- Sensitivity to Migraines or Headaches • **Do Not** use heavy cream and/or ointments
- Topical or Systemic Steroids

LED Light Therapy treatments have been explained to me and any questions I have regarding LED light therapy treatments have been answered.

I understand there are certain contraindications that preclude someone from receiving LED light therapy treatments. These include, but are not limited to epilepsy, pregnancy, thyroid conditions, medication causing light sensitivity and open wounds.

I also understand there are other precautions that should be considered before receiving LED light treatments and may require a doctor's release and/or I assume any risk involved. These include but not limited to a person receiving cortisone and/or steroid injections, and a person prone to light sensitive migraines.

Although LED light therapy is a noninvasive treatment and the precautions and contraindications have been explained to me, I understand that certain risks or complications can occur from known and unknown causes and I freely assume these risks.

I acknowledge no guarantee has been given to me as to the condition of the complexion, skin pore size, fine lines and wrinkles as results will vary per client/patient. I am aware that follow up treatments may be necessary to achieve optimal results with gradual results occurring over time.

I release _____, staff and specific spa technician from any liability associated with this procedure. I certify that I am at least 18 years old or I have parental consent as indicated as co – signature below.

Client Signature _____ Date _____

Co-Signature _____ Date _____

OXYGEN INFUSION SKIN CARE

How Does It Work?

Oxygen Infusion has an output oxygen pump to dispense 20.9% oxygen onto the skin. On a cleansed and toned skin apply 7.5 ml/1.5 teaspoons from one of our four Oxygen Infusion phase 1 serums (A, C, E complex or brightening). Use a facial mask brush to evenly apply a medium-thick application to face, neck and décolleté. Once application is completed pour 5 ml/1 teaspoon of Oxygen Infusion activator phase 2 into the airbrush cup, tightly close the lid.

Spray Oxygen Infusion activator phase 2 onto the skin in circular movements and activate the product by using the other hand. Massage the skin simultaneously while spraying the skin with Oxygen Infusion phase 2. The process is approximately 5-10 minutes or 3-4 passes to the face, neck and décolleté. Once passes have been completed massage the skin for 1-2 minutes. Remove with moistened room temperature towels and continue with skin treatment steps.

How Many Treatments Are Needed?

Oxygen Infusion may be incorporated with other modalities such as microdermabrasion, microcurrent, LED light therapy, skin scrubber + sonic wave or dermaplaning on a bi-monthly or monthly basis. Oxygen Infusion may also be used as a primary skin treatment.

When using oxygen infusion as a primary skin treatment schedule clients/patients twice a week for three weeks. This type of skin treatment plan allows clients/patients to reach their skin goals quickly for sensitive, pigmentation, oily/troubled or mature/aging skin. Clients may be seen every two weeks to maintain and sustain their skin results.

Who Benefits?

All skin types, conditions and colors may benefit from Oxygen Infusion Skin Treatment after a thorough client consultation from a skin care professional.

Our formulations are performance driven, providing healthy long-lasting skin results for a healthy youthful appearance.

OXYGEN INFUSION SKIN CARE

Client/Patient

Contraindications

- Accutane Users (Should be a minimum of 8 months) When in doubt obtain a physician release from your client
- Pregnancy
- Breast Feeding
- Rosacea - Advanced Stages III
- Sunburn
- Cancer/Skin Cancer/Open Lesions
- Do Not Use in combination with TCA, Jessner or Salicylic Acid Cosmetic Acids

Precautions

- Use caution and review cosmetic acid pH before performing Oxygen Infusion (Glycolic, Mandelic, Azelaic, Lactic, Citric) skin must be free from all sensitivity before applying Skin for Life's Oxygen Infusion
- Retinoid (Retin A, Tazorac, Differin or any vitamin A derivative topical product). Have client/patient discontinue for 3-5 days prior to performing an Oxygen Infusion Skin Treatment
- Skin Sensitivity
- Contacts - Please have clients/patients remove their contacts before procedure
- Under the care of a physician - general for all procedures administered

OXYGEN INFUSION SKIN CARE

Information

Areas of Application

- Face, Neck and Décolleté
- Shoulders and Back
- Hands and Arms
- Elbows, Knees & Feet

Client Consultation

INTAKE FORM (sample included) - Skin for Life recommends a complete intake before performing any skin spa service.

Medical History • Medical Conditions • Allergies • Stress • Cosmetic Procedures •

Current Skin Care • Sensitivities • Topical Creams (Retin A, Differin, Tazarac, Renova, ...) •

Medications - always ask your client/patient if they are taking any new medication(s).

TREATMENT COST

PRODUCT ITEM #	PRODUCT COST	COST PER TREATMENT
Oxygen Infusion Gel A, C, E complex phase 1	\$33.00	\$2.06 per treatment
Oxygen Infusion Gel brightening phase 1	\$33.00	\$2.06 per treatment
Oxygen Infusion activator phase 2	\$45.00	\$1.25 per treatment
TOTAL COST PER TREATMENT		\$3.31 (1) PHASE 1 + PHASE 2

OXYGEN INFUSION SKIN CARE

Product & Accessories

Oxygen Infusion therapy is a unique formulation. The enzymes within the stratum corneum are very active. Our formulations encourage skin activity which create an interaction between the skin enzymes and the oxygen infusion phase 1 gels and oxygen infusion phase 2 activator. This interaction creates the enzymes to become aware of the stimulation. Enzymes quickly breakdown certain ingredients within our formulations into the skin's pure oxygen element.

This is a natural chemistry action for creating an oxygen environment to improve healthy circulation and cellular responses.

When adding Oxygen Infusion to the Nue Skin Scrubber + Sonic Waves machine you will receive the following:



Oxygen Infusion brightening + LSS™ delivery phase 1 - Perfect for various pigment discolorations that may occur from sun exposure or hormonal challenges, See Photo Aging protocol for additional treatment information.



Oxygen Infusion A, C, E Complex + LSS™ delivery phase 1 - Stimulates epidermal responses to plump wrinkles and fine lines while providing antioxidant protection. See Age Defying Skin protocol for additional treatment information.



Oxygen Infusion activator phase 2 - is to be used with Oxygen Infusion Gels phase 1. Phase 2 is used inside the airbrush cup as the primary catalyst to create pure oxygen.



Oxygen Infusion airbrush attachment with 1 oz. O2 Cleaner. Please see troubleshooting guide for additional details.



OXYGEN INFUSION THERAPY AIRBRUSH

Maintenance Information

There is required maintenance to effectively maintain a well functioning airbrush applicator. Please follow the steps and images below after every use. The airbrush applicator must be cleaned **after every treatment use**. Failing to do so may jeopardize the warranty for this item.

The warranty for Oxygen Infusion Airbrush is 90-days. If the airbrush becomes compromised please follow the troubleshooting guidelines in order to resolve any concerns. If once you have followed those important steps and the airbrush is still impaired please call Skin for Life Service Dept. (866) 312.7546 for assistance.



STEP 1

- Take lid off from airbrush cup
- Pour O2 Cleaner into cup. Fill approximately 1/4 full
- Close cup with the lid

STEP 2 continued

- Spray until the O2 cleaner is empty. (30 second process)

Step 3

- ADD TAP WATER - pour into the cup. Fill approximately 1/4 full
- Repeat the previous steps.

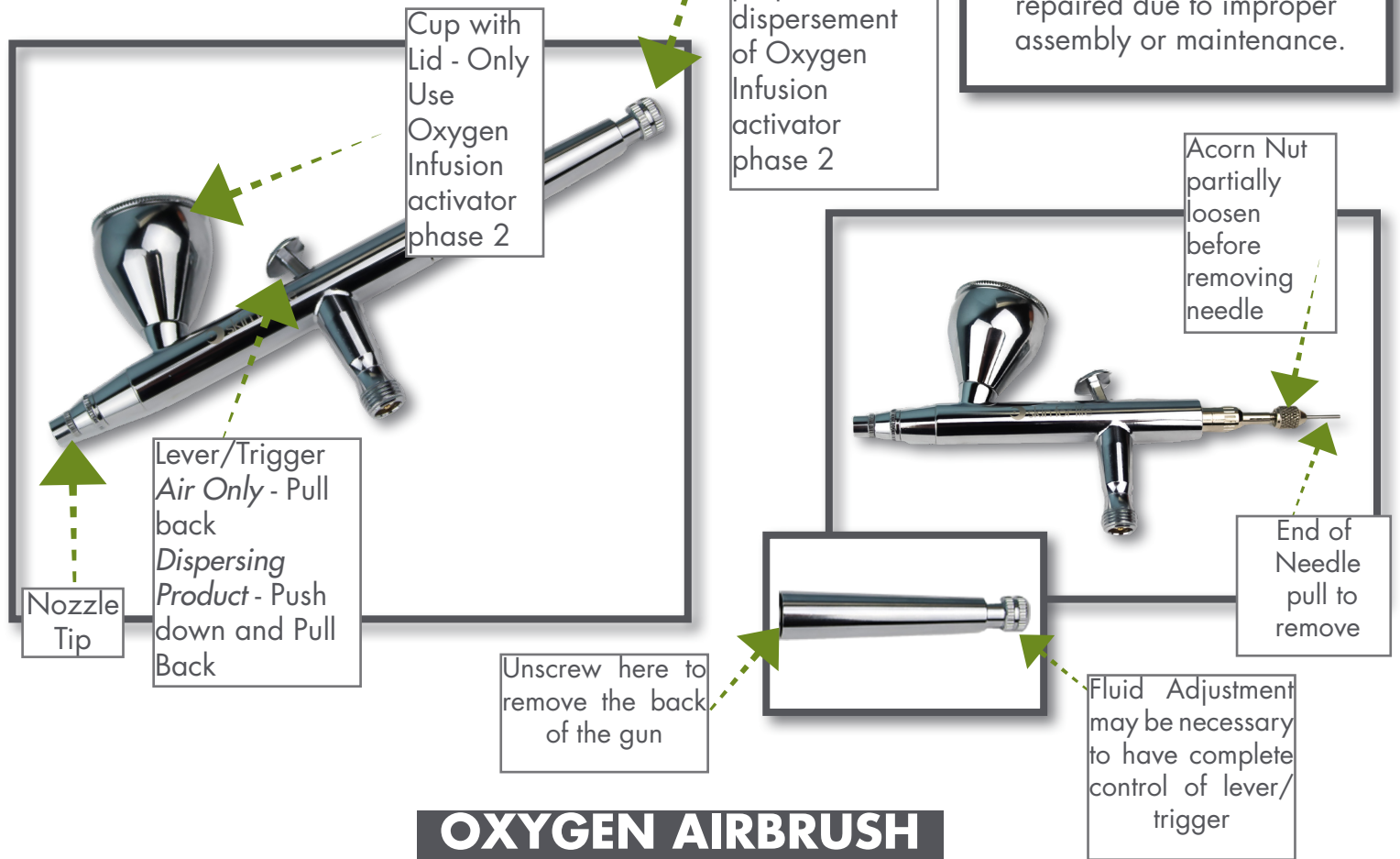


STEP 2

- Place a 4 x 4 gauze in one hand.
- Make sure tip of airbrush is touching the gauze. The liquid will build up and dislodge any solids
- Use index finger to push down and pull back the lever/trigger



Things to **MAINTAIN:**



OXYGEN AIRBRUSH

Clogging -

Look for "signs" of product build up due to improper maintenance -

- Lever - may not pull back when dispersing Oxygen Infusion activator phase 2 or may only disperse air
- Fluid Adjustment - may not adjust easily. May be hard to turn
- Nozzle Tip - may see white or a slight bluish tone of residue around the tip.

Checking Needle for Build Up

- Remove the back of the oxygen gun - view image
- End of needle will be apparent - view image
- Loosen the "Acorn Nut" **partially**. Pull the needle out from the back
- Soak needle in "Oxygen Infusion Cleaner" for 24 hours or if unavailable use "Hot Water". You may use a "Scrub Pad" to remove residue build up

- After 24 hours make sure needle is completely "DRY". Reinsert needle and tighten "Acorn Nut"
- Replace the back and tighten. If necessary adjust "Fluid Adjustment Knob" for lever/trigger control
- Test Oxygen Airbrush

NUE SKIN SCRUBBER + SONIC WAVES MACHINE

Professional Skin Care + LSS™ delivery



When Skin for Life started manufacturing machines, we knew as a company that skin care should be a rebuilding process from progressive treatments like microdermabrasion. We started working with cosmetic experts to formulate our immunity professional skin care. Our Skin for Life pure science skin care repairs, recovers and restores all skin types, conditions and colors without inflammation or skin irritation.

We wanted building blocks for long term healthy skin results. Our product line removes the stress, so all skin may proceed with a normal, healthy function. Skin for Life trademarked LSS™ delivery “Life Sustaining System” enriches our formulas by providing key amino acids and peptides that are immunity driven for your skin’s protection and well being. Our ingredients are the innovative performance that makes Skin for Life pure science perfect for every skin condition, type and color.

It is our pleasure to introduce you to Skin for Life pure science. You may add our signature treatments to your menu and introduce healthy results to your clients/patients.

©2019 all rights reserved
Skin for Life a division of Lifeline Medical, Inc.

Age Defying Skin Treatment

Age Defying Skin Treatment from Skin for Life is designed for mature and aging skin. The skin may appear to have wrinkles, fine lines, loss of elasticity, thin skin or uneven texture.

You may perform a series of 6 treatments. Recommend clients schedule two weeks apart for skin repair, recovery and optimal results.

Age Defying Skin Treatment Protocol



Apply 5 ml / 1 teaspoon on dry skin. Massage for 1-2 minutes. Wet your hands and massage one more minute.

Remove carefully with moistened room temperature towels or compressed sponges.

You may remove eye makeup during your cleansing step. Remove the eye makeup gently with moistened cotton rounds.



Apply 2.5 ml/ 1/2 teaspoon on dry skin. May use as a spray or saturate a cotton round or pad.

Apply to face, neck and décolleté as an even application.

Dry skin thoroughly.



Apply 15 ml/ 1 tablespoon on dry skin. Apply an even application to face, neck and décolleté with a facial mask brush.

Avoid eye area.

Massage for 1-2 minutes without adding water. Moisten hands and massage for another 2-3 minutes. Keep skin moist throughout the skin scrubber application.

Begin with Nue Skin Scrubber Application. Follow technique for optimum skin results.

When performing Nue skin scrubber - Maintain consistent movement. Review diagram for technique.



DRY, MATURE & PHOTO DAMAGED SKIN	MODE	TIME ALLOWED
50%	II	7-10 minutes

Age Defying Skin Treatment

Age Defying Skin Treatment from Skin for Life is designed for mature and aging skin. The skin may appear to have wrinkles, fine lines, loss of elasticity, thin skin or uneven texture.

You may perform a series of 6 treatments. Recommend clients schedule two weeks apart for skin repair, recovery and optimal results.

Age Defying Skin Treatment Protocol



Apply 2.5 ml / ½ teaspoon on dry skin. It can be used as a spray or saturate a cotton round.

Dry the skin thoroughly.



Apply 15 ml/ 1 tablespoon on dry skin. Apply an even application to face, neck and décolleté with a dry esthetic gauze. Avoid eye area.

DO NOT REMOVE.

Dry skin thoroughly before proceeding with Oxygen Infusion A, C, E complex.



Apply 7.5 ml/ 1 ½ teaspoon on dry skin.

Apply an even, medium- thick application to face, neck and décolleté with a facial mask brush of the Oxygen Infusion A, C, E complex. Avoid direct eye area.

Use effleurage and lifting massage movements. Massage for 1-2 minutes. This will excite the skin's receptivity. Do Not Remove.



Use 5 ml/ 1 teaspoon. Pour into an airbrush applicator cup.

Start with airbrush movements. Use small to medium circular movements over the Oxygen Infusion Gel phase 1.

Make at least 3 passes while manipulating the Oxygen Infusion Gel phase 1 with finger tips. This will ensure a thorough application.

Once completed, massage for another 1-2 minutes using effleurage, petrissage or lifting massage movements.

Remove with moistened room temperature towels or compressed sponges.

Age Defying Skin Treatment

Age Defying Skin Treatment from Skin for Life is designed for mature and aging skin. The skin may appear to have wrinkles, fine lines, loss of elasticity, thin skin or uneven texture.

You may perform a series of 6 treatments. Recommend clients schedule two weeks apart for skin repair, recovery and optimal results.

Age Defying Skin Treatment Protocol



Apply 2.5 ml / $\frac{1}{2}$ teaspoon on dry skin. It can be used as a spray or saturate a cotton round.

Dry the skin thoroughly before L.E.D. Light application.



On dry skin apply RED L.E.D. Light hand piece for 90 seconds and transition with a 30% - 50% overlap by placing the hand piece to another skin area. Continue with RED L.E.D. Light placement until application is complete.

If “Acne or Oily Skin” is present continue with the BLUE L.E.D. Light hand piece and apply the same above steps over the skin areas of concern until application time is completed.

Note*

Avoid direct contact with eye area and thyroid area.



Apply 1.25 ml/ $\frac{1}{4}$ teaspoon on dry skin. Apply to face, neck and décolleté. May apply around the eye area for a hydrating eye serum.

Massage until serum is absorbed.



Apply 5 ml/ 1 teaspoon after the Skin for Life Performance Serum Application. Apply to face, neck and décolleté. Blend well.

May use as an intensive antioxidant cream for photo-damaged skin.

May use lifting massage movements to firm and tighten the skin.

©2019 all rights reserved
Skin for Life a division of Lifeline Medical, Inc.

Age Defying Skin Treatment

Age Defying Skin Treatment from Skin for Life is designed for mature and aging skin. The skin may appear to have wrinkles, fine lines, loss of elasticity, thin skin or uneven texture.

You may perform a series of 6 treatments. Recommend clients schedule two weeks apart for skin repair, recovery and optimal results.

Age Defying Skin Treatment Protocol



Apply 2.5 ml/ 1/2 teaspoon after Vital Recovery or Ultra Performing Application. Apply to face, neck and décolleté. Blend well.

May use as an intensive neck cream for sagging skin.

May use as a massage medium with massage techniques. Protects and nourishes as a second skin.



Apply a medium - thick application over Skin for Life's skin care. Use a facial mask brush or esthetic gauze for an even application.

To ensure conductivity with the Flat Sonic or Cone Shaped Sonic hand piece apply a second application of water. This is important for a positive response between skin and hand piece.

Conductivity Gel must be applied before Sonic Wave hand piece application.

Once Sonic Wave application is completed remove with room temperature towels.



Flat Sonic Hand Piece - Use recommended settings.

<p>C - CONSTANT - Time Duration - 10 minutes Increase by 4-8 lights</p>	<p>PULSE - Time Duration - 10-20 minutes Intermittent wave Increase by 4-8 lights</p>
---	---

Cone Shaped Hand Piece - Use recommended settings.

<p>EYE AREA FINE LINES & WRINKLES AROUND LIP AREA</p>	<p>C - CONSTANT - Time Duration - 10 minutes Increase by 3-6 lights</p>
--	---

Age Defying Skin Treatment

Age Defying Skin Treatment from Skin for Life is designed for mature and aging skin. The skin may appear to have wrinkles, fine lines, loss of elasticity, thin skin or uneven texture.

You may perform a series of 6 treatments. Recommend clients schedule two weeks apart for skin repair, recovery and optimal results.

Age Defying Skin Treatment Protocol



Apply 2.5 ml / ½ teaspoon on dry skin. It can be used as a spray or saturate a cotton round.

Dry the skin thoroughly.



Apply 1.25 ml/ ¼ teaspoon on dry skin. Apply to face, neck and décolleté. May apply around the eye area for a hydrating eye serum.

Massage until serum is absorbed.



Apply 5 ml/ 1 teaspoon after the Skin for Life Performance Serum Application.

Apply to face, neck and décolleté. Blend well.

May use as a healing cream for sensitive skins.



Apply 2.5 ml/ ½ teaspoon after Vital Recovery or Ultra Performing Application. Apply to face, neck and décolleté. Blend well.

May use as an intensive neck cream for sagging skin.

May use as a massage medium with massage techniques. Protects and nourishes as a second skin.

Age Defying Skin Treatment

Age Defying Skin Treatment from Skin for Life is designed for mature and aging skin. The skin may appear to have wrinkles, fine lines, loss of elasticity, thin skin or uneven texture.

You may perform a series of 6 treatments. Recommend clients schedule two weeks apart for skin repair, recovery and optimal results.

Age Defying Skin Treatment Protocol



Use 1 sachet (CryoAlgae Mask) and 1 sachet (CryoAlgae Booster) for face. Use 2 sachets for face and neck. CryoAlgae Mask + Booster is used as the final mask treatment step.

- Pour content of CryoAlgae Mask sachet into a “glass or stainless steel bowl”
- Pour content of CryoAlgae booster into the same bowl
- Mix quickly together with a plastic spatula until a creamy consistency
- Saturate cotton round with Instant Soothing Toner. Place over the eyes for a hydrating and cooling effect. Spread CryoAlgae Mask + CryoAlgae Booster onto skin immediately. Apply over the eye area for an “Advanced Eye Treatment”. Advanced Eye Treatment is optional
- Mask setting time is within 10 minutes
- Once setting time is completed, start at the ends of the mask and lift with fingers to remove and slowly peel off
- Remove mask residue with room temperature towel(s) or compressed sponges



Apply 2.5 ml/ ½ teaspoon on dry skin. May use as a spray or saturate a cotton round or pad.

Apply to face, neck and décolleté as an even application.

Dry skin thoroughly.



Apply 1.25 ml/ ¼ teaspoon on dry skin. Apply to face, neck and décolleté. May apply around the eye area for a hydrating eye serum.

Massage until serum is absorbed.

Age Defying Skin Treatment

Age Defying Skin Treatment from Skin for Life is designed for mature and aging skin. The skin may appear to have wrinkles, fine lines, loss of elasticity, thin skin or uneven texture.

You may perform a series of 6 treatments. Recommend clients schedule two weeks apart for skin repair, recovery and optimal results.

Age Defying Skin Treatment Protocol



Apply 5 ml/ 1 teaspoon after the Skin for Life Performance Serum Application.
Apply to face, neck and décolleté. Blend well.
Excellent antioxidant protection before sunscreen.



Apply 2.5 ml/ 1/2 teaspoon as the final treatment step after a Skin for Life moisturizer application.
Apply to face, neck and décolleté. Blend well.
May use on face and body for sunscreen protection.

Simply Sensitive Skin Treatment

Simply Sensitive Skin Treatment from Skin for Life is designed for temporary or chronic sensitive skin conditions. The skin may appear to have redness, dryness, chapped skin or capillary distention (telangiectasia)

You may perform a series of 3-6 treatments, depending on the sensitivity. Recommend clients schedule two weeks apart for skin repair, recovery and optimal results.

Simply Sensitive Skin Treatment Protocol



Apply 5 ml/1 teaspoon on dry skin. Massage for 1-2 minutes.
 Moisten hands and massage for another minute.
 Remove with moistened room temperature towels or compressed sponges.
 Dry skin thoroughly.
 Note*
 May pour into a glass bowl and mix with a facial mask brush. Apply and begin a light massage. Complete with above steps.



Apply 2.5 ml/ 1/2 teaspoon on dry skin. May use as a spray or saturate a cotton round or pad.
 Apply to face, neck and décolleté as an even application.
 Dry skin thoroughly.



Apply 15 ml/ 1 tablespoon on dry skin. Apply an even application to face, neck and décolleté with a facial mask brush.
 Avoid eye area.
 Massage for 1-2 minutes without adding water. Moisten hands and massage for another 2-3 minutes. Keep skin moist throughout the skin scrubber application.
 Begin with Nue Skin Scrubber Application. Follow technique for optimum skin results.

When performing Nue skin scrubber - Maintain consistent movement. Review diagram for technique.



SENSITIVE, ALLERGIC SKIN, ACTIVE ACNE	MODE	TIME ALLOWED
50%	I	5 minutes

Simply Sensitive Skin Treatment

Simply Sensitive Skin Treatment from Skin for Life is designed for temporary or chronic sensitive skin conditions. The skin may appear to have redness, dryness, chapped skin or capillary distention (telangiectasia)

You may perform a series of 3-6 treatments, depending on the sensitivity. Recommend clients schedule two weeks apart for skin repair, recovery and optimal results.

Simply Sensitive Skin Treatment Protocol



Apply 2.5 ml/ 1/2 teaspoon on dry skin. May use as a spray or saturate a cotton round or pad.

Apply to face, neck and décolleté, as an even application.

Dry skin thoroughly.



Apply 7.5 ml/ 1 1/2 teaspoon on dry skin.

Apply an even, medium- thick application to face, neck and décolleté with a facial mask brush.

- Use light effleurage massage movements. Massage for 1-2 minutes. This will excite the skin's receptivity. Do Not Remove



- Pour 5 ml/ 1 teaspoon of Oxygen Infusion activator phase 2 into an airbrush applicator cup
- Start with airbrush movements. Use small to medium circular movements over the Oxygen Infusion sensitive phase 1
- Make at least 3 passes while manipulating the Oxygen Infusion sensitive with finger tips. This will ensure a thorough application
- Once completed, massage for another 1-2 minutes using light effleurage massage movements
- Remove with moistened room temperature towels or compressed sponges



Apply 2.5 ml/ 1/2 teaspoon on dry skin. May use as a spray or saturate a cotton round or pad.

Apply to face, neck and décolleté as an even application.

Dry skin thoroughly.

Simply Sensitive Skin Treatment

Simply Sensitive Skin Treatment from Skin for Life is designed for temporary or chronic sensitive skin conditions. The skin may appear to have redness, dryness, chapped skin or capillary distention (telangiectasia)

You may perform a series of 3-6 treatments, depending on the sensitivity. Recommend clients schedule two weeks apart for skin repair, recovery and optimal results.

Simply Sensitive Skin Treatment Protocol



On dry skin apply RED L.E.D. Light hand piece for 90 seconds and transition with a 30% - 50% overlap by placing the hand piece to another skin area. Continue with RED L.E.D. Light placement until application is complete.

Note*

Avoid direct contact with eye area and thyroid area.



Apply 1.25 ml/ 1/4 teaspoon on dry skin. Apply to face, neck and décolleté.

May apply around the eye area for a hydrating eye serum.

Perform a light effluerage massage until serum is absorbed.



Apply 5 ml/ 1 teaspoon after Vita C Peptide Serum.

Apply to face, neck and décolleté. Blend well. May use as a healing cream for sensitive skins.

Perform light effluerage massage movements until moisturizer is absorbed.



Apply 2.5 ml/ 1/2 teaspoon after Vital Recovery application.

Apply to face, neck and décolleté. Blend well.

May use as an intensive neck cream for sagging skin.

May use as a light massage medium with massage techniques.

Simply Sensitive Skin Treatment

Simply Sensitive Skin Treatment from Skin for Life is designed for temporary or chronic sensitive skin conditions. The skin may appear to have redness, dryness, chapped skin or capillary distention (telangiectasia)

You may perform a series of 3-6 treatments, depending on the sensitivity. Recommend clients schedule two weeks apart for skin repair, recovery and optimal results.

Simply Sensitive Skin Treatment Protocol



Apply a medium - thick application over Skin for Life's skin care. Use a facial mask brush or esthetic gauze for an even application.

To ensure conductivity with the Flat Sonic or Cone Shaped Sonic hand piece apply a second application of water. This is important for a positive response between skin and hand piece.

Conductivity Gel must be applied before Sonic Wave hand piece application.

Once Sonic Wave application is completed remove with room temperature towels.



Flat Sonic Hand Piece - Use recommended settings.

N/A	PULSE - Time Duration - 5-8 minutes Intermittent wave Increase by 4-8 lights
------------	---

Cone Shaped Hand Piece - Use recommended settings.

EYE AREA FINE LINES & WRINKLES AROUND LIP AREA	C - CONSTANT - Time Duration - 8-10 minutes Increase by 3-6 lights
---	--



Apply 2.5 ml/ 1/2 teaspoon on dry skin.

May use as a spray or saturate a cotton round or pad.

Apply to face, neck and décolleté as an even application.

Dry skin thoroughly.

Simply Sensitive Skin Treatment

Simply Sensitive Skin Treatment from Skin for Life is designed for temporary or chronic sensitive skin conditions. The skin may appear to have redness, dryness, chapped skin or capillary distention (telangiectasia)

You may perform a series of 3-6 treatments, depending on the sensitivity. Recommend clients schedule two weeks apart for skin repair, recovery and optimal results.

Simply Sensitive Skin Treatment Protocol



Apply 1.25 ml/ 1/4 teaspoon on dry skin.
Apply to face, neck and décolleté.
May apply around the eye area for a hydrating eye serum.
Perform with a light effleurage massage until serum is absorbed.



Apply 5 ml/ 1 teaspoon after Vita C Peptide Serum application.
Apply to face, neck and décolleté. Blend well.
May perform a light effleurage massage or lymphatic massage until moisturizer is absorbed.



Use 1 sachet (CryoAlgae Mask) and 1 sachet (CryoAlgae Booster) for face.
Use 2 sachets of each for face and neck.

- Pour content of CryoAlgae Mask sachet into a “glass or stainless steel bowl”
- Pour content of CryoAlgae booster into the same bowl
- Mix quickly together with a plastic spatula until a creamy consistency
- Saturate a cotton round with Instant Soothing Toner. Place over the eyes for a hydrating and cooling effect. Spread CryoAlgae Mask + CryoAlgae Booster onto skin immediately. Apply over the eye area for an “Advanced Eye Treatment”. Advanced Eye Treatment is optional
- Mask setting time is within 10 minutes
- Once setting time is completed, start at the ends of the mask and lift with fingers to remove and slowly peel off
- Remove mask residue with room temperature towel(s) or compressed sponges



Or may use Revitalizing Mint Mask as the final mask. See Separate Product Instructions.

©2019 all rights reserved
Skin for Life a division of Lifeline Medical, Inc.

Simply Sensitive Skin Treatment

Simply Sensitive Skin Treatment from Skin for Life is designed for temporary or chronic sensitive skin conditions. The skin may appear to have redness, dryness, chapped skin or capillary distention (telangiectasia)

You may perform a series of 3-6 treatments, depending on the sensitivity. Recommend clients schedule two weeks apart for skin repair, recovery and optimal results.

Simply Sensitive Skin Treatment Protocol



Apply 2.5 ml/ 1/2 teaspoon on dry skin.
May use as a spray or saturate a cotton round or pad.
Apply to face, neck and décolleté as an even application.
Dry skin thoroughly.



Apply 1.25 ml/ 1/4 teaspoon on dry skin.
Apply to face, neck and décolleté.
May apply around the eye area for a hydrating eye serum.
Perform with a light effleurage massage until serum is absorbed.



Apply 5 ml/ 1 teaspoon after Vita C Peptide Serum application.
Apply to face, neck and décolleté. Blend well.
May perform a light effleurage massage or lymphatic massage until moisturizer is absorbed.



Apply 2.5 ml/ 1/2 teaspoon as the final treatment step after a Skin for Life moisturizer application.
Apply to face, neck and décolleté. Blend well.

Oily-Troubled Skin Treatment

Oily Skin Treatment from Skin for Life is designed for oily, thick and troubled skin. The skin may appear to have excessive oil, open/closed comedones, milia cyst, Grade I-II acne or thick stratum corneum layer.

You may perform a series of 6 treatments. Recommend clients schedule two weeks apart for skin repair, recovery and optimal results.

Oily-Troubled Skin Treatment Protocol



Apply 5 ml/1 teaspoon on dry skin. Massage for 1-2 minutes. Moisten hands and massage for another minute.

Remove carefully with moistened room temperature towels or compressed sponges.

Avoid direct eye contact.



Apply 2.5 ml/ 1/2 teaspoon on dry skin. May saturate a cotton round or pad. Apply to face, neck and décolleté as an even application. Dry the skin thoroughly.

Note*

If skin is “oily-sensitive”, may use Instant Soothing Toner natural actives as the treatment toner.



Apply 15 ml/ 1 tablespoon on dry skin. Apply an even application to face, neck and décolleté with a facial mask brush.

Avoid eye area.

Massage for 1-2 minutes without adding water. Moisten hands and massage for another 2-3 minutes. Keep skin moist throughout the skin scrubber application.

Begin with Nue Skin Scrubber Application. Follow technique for optimum skin results.



When performing Nue skin scrubber - Maintain consistent movement. Review diagram for technique.

OILY & ACTIVE ACNE SKIN	MODE	TIME ALLOWED
75%	II	10 minutes

Oily-Troubled Skin Treatment

Oily Skin Treatment from Skin for Life is designed for oily, thick and troubled skin. The skin may appear to have excessive oil, open/closed comedones, milia cyst, Grade I-II acne or thick stratum corneum layer.

You may perform a series of 6 treatments. Recommend clients schedule two weeks apart for skin repair, recovery and optimal results.

Oily-Troubled Skin Treatment Protocol



Apply 2.5 ml/ ½ teaspoon on dry skin. May saturate a cotton round or pad. Apply to face, neck and décolleté as an even application.

Dry the skin thoroughly before performing Professional Peel System.

Note*

If skin is “oily-sensitive”, may use Instant Soothing Toner natural actives as the treatment toner.



Apply 15 ml/ 1 tablespoon on dry skin.

Apply an even application to face, neck and décolleté with esthetic gauze. Avoid eye area.

DO NOT REMOVE.

Dry Skin Thoroughly.



Apply 15 ml/ 1 tablespoon on dry skin after Pro Radiance Peel application.

Apply an even application to face, neck and décolleté with esthetic gauze or cotton rounds. Avoid eye area.

- Apply Professional Peel to one area at a time using no more than 4 layers
- Wait 30 seconds to 1 minute. Saturate a new gauze pad with ice cold water and press the cold moistened gauze onto the treated area
- Repeat until there is no sensation of peel activity. (Tingling or Heat sensation)
- Dry skin thoroughly
- Proceed to the next untreated area. Repeat above steps
- Once face, neck and décolleté are completed, use Instant Soothing Toner natural actives then proceed with the remaining skin care treatment steps

Oily-Troubled Skin Treatment

Oily Skin Treatment from Skin for Life is designed for oily, thick and troubled skin. The skin may appear to have excessive oil, open/closed comedones, milia cyst, Grade I-II acne or thick stratum corneum layer.

You may perform a series of 6 treatments. Recommend clients schedule two weeks apart for skin repair, recovery and optimal results.

Oily-Troubled Skin Treatment Protocol



Apply 2.5 ml/ 1/2 teaspoon on dry skin. May use as a spray or saturate a cotton round or pad.

Apply to face, neck and décolleté as an even application.

Dry skin thoroughly.



Apply 7.5 ml/ 1 1/2 teaspoon on dry skin.

Apply an even, medium- thick application to face, neck and décolleté with a facial mask brush. Avoid eye area.

Use petrissage or tapotement massage movements. Massage for 1-2 minutes. This will excite the skin's receptivity.

Do Not Remove.



Use 5 ml/ 1 teaspoon. Pour into an airbrush applicator cup.

Start with airbrush movements. Use small to medium circular movements over the Oxygen Infusion Gel phase 1.

Make at least 3 passes while manipulating the Oxygen Infusion Gel phase 1 with finger tips. This will ensure a thorough application.

Once completed, massage for another 1-2 minutes using effleurage, petrissage or lifting massage movements.

Remove with moistened room temperature towel(s) or compressed sponges.



Apply 2.5 ml/ 1/2 teaspoon on dry skin. May use as a spray or saturate a cotton round or pad.

Apply to face, neck and décolleté as an even application.

Dry skin thoroughly.

Oily-Troubled Skin Treatment

Oily Skin Treatment from Skin for Life is designed for oily, thick and troubled skin. The skin may appear to have excessive oil, open/closed comedones, milia cyst, Grade I-II acne or thick stratum corneum layer.

You may perform a series of 6 treatments. Recommend clients schedule two weeks apart for skin repair, recovery and optimal results.

Oily-Troubled Skin Treatment Protocol



On dry skin apply RED L.E.D. Light hand piece for 90 seconds and transition with a 30% - 50% overlap by placing the hand piece to another skin area. Continue with RED L.E.D. Light placement until application is complete.

If “Acne or Oily Skin” is present continue with the BLUE L.E.D. Light hand piece and apply the same above steps over the skin areas of concern until application time is completed.

Note*

Avoid direct contact with eye area and thyroid area.



Apply 1.25 ml/ 1/4 teaspoon on dry skin. Apply to face, neck and décolleté.

May apply around the eye area for a hydrating eye serum. Massage until serum is absorbed.



Apply 5 ml/ 1 teaspoon after the Skin for Life Performance Serum application. Apply to face, neck and décolleté. Blend well. May be used in target areas of concern.

Perform a light massage until Antibac Essentials is absorbed.



Apply 5 ml/ 1 teaspoon after Antibac Essential application.

Apply to face, neck and décolleté. Blend well. May use as a healing cream for oily-sensitive skins.

Perform a light massage until Vital Recovery is absorbed.

May use as an extra eye cream for the delicate eye area.

Oily-Troubled Skin Treatment

Oily Skin Treatment from Skin for Life is designed for oily, thick and troubled skin. The skin may appear to have excessive oil, open/closed comedones, milia cyst, Grade I-II acne or thick stratum corneum layer.

You may perform a series of 6 treatments. Recommend clients schedule two weeks apart for skin repair, recovery and optimal results.

Oily-Troubled Skin Treatment Protocol



Apply a medium - thick application over Skin for Life's skin care. Use a facial mask brush or esthetic gauze for an even application.

To ensure conductivity with the Flat Sonic or Cone Shaped Sonic hand piece apply a second application of water. This is important for a positive response between skin and hand piece.

Conductivity Gel must be applied before Sonic Wave hand piece application.

Once Sonic Wave application is completed remove with room temperature towels.



Flat Sonic Hand Piece - Use recommended settings.

<p>C - CONSTANT - Time Duration - 10 minutes Increase by 4-8 lights</p>	<p>PULSE - Time Duration - 10-20 minutes Intermittent wave Increase by 4-8 lights</p>
---	---

Cone Shaped Hand Piece - Use recommended settings.

<p>EYE AREA FINE LINES & WRINKLES AROUND LIP AREA</p>	<p>C - CONSTANT - Time Duration - 10 minutes Increase by 3-6 lights</p>
--	---



Apply 2.5 ml/ 1/2 teaspoon on dry skin. May use as a spray or saturate a cotton round or pad.

Apply to face, neck and décolleté as an even application.

Dry skin thoroughly.

Oily-Troubled Skin Treatment

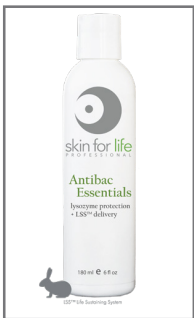
Oily Skin Treatment from Skin for Life is designed for oily, thick and troubled skin. The skin may appear to have excessive oil, open/closed comedones, milia cyst, Grade I-II acne or thick stratum corneum layer.

You may perform a series of 6 treatments. Recommend clients schedule two weeks apart for skin repair, recovery and optimal results.

Oily-Troubled Skin Treatment Protocol



Apply 1.25 ml/ 1/4 teaspoon on dry skin. Apply to face, neck and décolleté.
May apply around the eye area for a hydrating eye serum.
Massage until serum is absorbed.



Apply 5 ml/ 1 teaspoon after Vita C Peptide Serum. Apply to face, neck and décolleté. Blend well.



Apply 5 ml/ 1 teaspoon after Antibac Essentials application. Apply to face, neck and décolleté. Blend well.

Oily-Troubled Skin Treatment

Oily Skin Treatment from Skin for Life is designed for oily, thick and troubled skin. The skin may appear to have excessive oil, open/closed comedones, milia cyst, Grade I-II acne or thick stratum corneum layer.

You may perform a series of 6 treatments. Recommend clients schedule two weeks apart for skin repair, recovery and optimal results.

Oily-Troubled Skin Treatment Protocol



Use 1 sachet for face. Use 2 sachets for face and neck.

- Pour content of sachet into a “glass or stainless steel bowl”
- Pour 100ml of cool tap water into the bowl
- Mix quickly together with a plastic spatula until a creamy consistency
- Use plastic spatula and spread Anti Pollution Mask onto skin immediately. Avoid eye area
- Mask setting time is within 10 minutes
- Once setting time is completed start at the ends of the mask and lift with fingers to remove and slowly peel off
- Remove mask residue with room temperature towel(s) or compressed sponges



Apply 2.5 ml/ 1/2 teaspoon on dry skin. May use as a spray or saturate a cotton round or pad.

Apply to face, neck and décolleté as an even application. Remove mask residue thoroughly.

Dry skin thoroughly.



Apply 1.25 ml/ 1/4 teaspoon on dry skin. Apply to face, neck and décolleté. May apply around the eye area for a hydrating eye serum. Massage until serum is absorbed.

Oily-Troubled Skin Treatment

Oily Skin Treatment from Skin for Life is designed for oily, thick and troubled skin. The skin may appear to have excessive oil, open/closed comedones, milia cyst, Grade I-II acne or thick stratum corneum layer.

You may perform a series of 6 treatments. Recommend clients schedule two weeks apart for skin repair, recovery and optimal results.

Oily-Troubled Skin Treatment Protocol



Apply 5 ml/ 1 teaspoon to face, neck and décolleté. Blend well.



Apply 2.5 ml/ 1/2 teaspoon as the final treatment step after Vital Recovery Concentrate application.

Apply to face, neck and décolleté. Blend well.

Photo-Aging Skin Treatment

Photo-Aging Skin Treatment from Skin for Life is designed for pigmented skin conditions. The skin may appear to have melasma, hyperpigmentation, sun lentigines or other related sun pigmented conditions.

You may perform a series of 6 treatments. Recommend clients schedule two weeks apart for skin repair, recovery and optimal results.

Photo-Aging Skin Treatment Protocol



Apply 5 ml/1 teaspoon on dry skin. Massage for 1-2 minutes.

This product is safe to use as an eye makeup remover.

Moisten hands and massage for another minute.

Remove with moistened room temperature towels, compressed sponges or esthetic gauze.



Apply 2.5 ml/ 1/2 teaspoon on dry skin.

May use as a spray or saturate a cotton round or pad.

Apply to face, neck and décolleté as an even application.

Dry skin thoroughly.



Apply 15 ml/ 1 tablespoon on dry skin. Apply an even application to face, neck and décolleté with a facial mask brush.

Avoid eye area.

Massage for 1-2 minutes without adding water. Moisten hands and massage for another 2-3 minutes. Keep skin moist throughout the skin scrubber application.

Begin with Nue Skin Scrubber Application. Follow technique for optimum skin results.

When performing Nue skin scrubber - Maintain consistent movement. Review diagram for technique.



PHOTO DAMAGED & PIGMENT IRREGULARITIES	MODE	TIME ALLOWED
50%	II or III	10 minutes

Photo-Aging Skin Treatment

Photo-Aging Skin Treatment from Skin for Life is designed for pigmented skin conditions. The skin may appear to have melasma, hyperpigmentation, sun lentigines or other related sun pigmented conditions.

You may perform a series of 6 treatments. Recommend clients schedule two weeks apart for skin repair, recovery and optimal results.

Photo-Aging Skin Treatment Protocol



Apply 2.5 ml/ 1/2 teaspoon on dry skin. May use as a spray or saturate a cotton round or pad.

Apply to face, neck and décolleté as an even application.

Dry skin thoroughly.



Apply 15 ml/ 1 tablespoon on dry skin.

Apply an even application to face, neck and décolleté with esthetic gauze. Avoid eye area.

DO NOT REMOVE.

Dry skin thoroughly.



Apply 7.5 ml/ 1 1/2 teaspoon on dry skin after an exfoliation application.

Apply an even medium- thick application to face, neck and décolleté with a facial mask brush. Avoid eye area.

Use effleurage and lifting massage movements. Massage for 1-2 minutes. This will excite the skin's receptivity. Do Not Remove.



Use 5 ml/ 1 teaspoon. Pour into an airbrush applicator cup.

- Start with airbrush movements. Use small to medium circular movements over the Oxygen Infusion Gel phase 1
- Make at least 3 passes while manipulating the Oxygen Infusion Gel phase 1 with finger tips. This will ensure a thorough application
- Once completed, massage for another 1-2 minutes using effleurage, petrissage or lifting massage movements
- Remove with moistened room temperature towel(s) or compressed sponges

Photo-Aging Skin Treatment

Photo-Aging Skin Treatment from Skin for Life is designed for pigmented skin conditions. The skin may appear to have melasma, hyperpigmentation, sun lentigines or other related sun pigmented conditions.

You may perform a series of 6 treatments. Recommend clients schedule two weeks apart for skin repair, recovery and optimal results.

Photo-Aging Skin Treatment Protocol



Apply 2.5 ml/ 1/2 teaspoon on dry skin. May use as a spray or saturate a cotton round or pad.

Apply to face, neck and décolleté as an even application.

Dry skin thoroughly.



On dry skin apply RED L.E.D. Light hand piece for 90 seconds and transition with a 30% - 50% overlap by placing the hand piece to another skin area. Continue with RED L.E.D. Light placement until application is complete.

Note*

Avoid direct contact with eye area and thyroid area.



Apply 1.25 ml/ 1/4 teaspoon on dry skin. Apply to face, neck and décolleté.

May apply around the eye area for a hydrating eye serum.

Perform effleurage lifting massage until serum is absorbed.



Apply 5 ml/ 1 teaspoon after Vita C Peptide Serum application. Apply to face, neck and décolleté. Blend well.

Perform effleurage lifting massage or lymphatic drainage for skin performance.

May use as an intensive neck and décolleté cream for skin firming.

Photo-Aging Skin Treatment

Photo-Aging Skin Treatment from Skin for Life is designed for pigmented skin conditions. The skin may appear to have melasma, hyperpigmentation, sun lentigines or other related sun pigmented conditions.

You may perform a series of 6 treatments. Recommend clients schedule two weeks apart for skin repair, recovery and optimal results.

Photo-Aging Skin Treatment Protocol



Apply a medium - thick application over Skin for Life's skin care. Use a facial mask brush or esthetic gauze for an even application.

To ensure conductivity with the Flat Sonic or Cone Shaped Sonic hand piece apply a second application of water. This is important for a positive response between skin and hand piece.

Conductivity Gel must be applied before Sonic Wave hand piece application.

Once Sonic Wave application is completed remove with room temperature towels.



Flat Sonic Hand Piece - Use recommended settings.

C - CONSTANT -
Time Duration -
10 minutes
Increase by
4-8 lights

PULSE -
Time Duration -
10-20 minutes
Intermittent wave
Increase by
4-8 lights

Cone Shaped Hand Piece - Use recommended settings.

**EYE AREA
FINE LINES & WRINKLES
AROUND LIP AREA**

C - CONSTANT -
Time Duration -
10 minutes
Increase by
3-6 lights



Apply 2.5 ml/ 1/2 teaspoon on dry skin. May use as a spray or saturate a cotton round or pad.

Apply to face, neck and décolleté as an even application.

Dry skin thoroughly.

Photo-Aging Skin Treatment

Photo-Aging Skin Treatment from Skin for Life is designed for pigmented skin conditions. The skin may appear to have melasma, hyperpigmentation, sun lentigines or other related sun pigmented conditions.

You may perform a series of 6 treatments. Recommend clients schedule two weeks apart for skin repair, recovery and optimal results.

Photo-Aging Skin Treatment Protocol



Apply 1.25 ml/ 1/4 teaspoon on dry skin. Apply to face, neck and décolleté. May apply around the eye area for a hydrating eye serum.

Perform light massage until serum is absorbed.



Apply 5 ml/ 1 teaspoon after Moisture Booster application. Apply to face, neck and décolleté. Blend well.

Perform light effleurage massage movements until moisturizer is absorbed.

May apply as an extra hydrating soothing cream for the delicate eye area.



Apply 15 ml/ 1 tablespoon over Skin for Life serum(s) and moisturizer(s) as a finishing mask.

Apply an even application to face, neck and décolleté with a facial mask brush. Avoid eye area.

Leave mask on for 5-7 minutes. Remove with moistened room temperature towels or compressed sponges.

May apply cold towels for intense cooling, calming and soothing for skin recovery.



Apply 2.5 ml/ 1/2 teaspoon on dry skin. May use as a spray or saturate a cotton round or pad.

Apply to face, neck and décolleté as an even application.

Dry skin thoroughly.

Photo-Aging Skin Treatment

Photo-Aging Skin Treatment from Skin for Life is designed for pigmented skin conditions. The skin may appear to have melasma, hyperpigmentation, sun lentigines or other related sun pigmented conditions.

You may perform a series of 6 treatments. Recommend clients schedule two weeks apart for skin repair, recovery and optimal results.

Photo-Aging Skin Treatment Protocol



Apply 1.25 ml/ 1/4 teaspoon on dry skin. Apply to face, neck and décolleté.
May apply around the eye area for a hydrating eye serum.
Perform effleurage lifting massage until serum is absorbed.



Apply 5 ml/ 1 teaspoon after Vita C Peptide Serum application. Apply to face, neck and décolleté. Blend well.
Perform effleurage lifting massage or lymphatic drainage for skin performance.
May use as an intensive neck and décolleté cream for skin firming.



Apply 2.5 ml/ 1/2 teaspoon after Ultra Performing Complex application. Apply to face, neck and décolleté. Blend well.
May use as an intensive neck and décolleté cream for loose, sagging skin.
Apply around the delicate eye area as a second skin protection against dehydration.



Apply 2.5 ml/ 1/2 teaspoon as the final treatment step after a Skin for Life moisturizer application.
Apply to face, neck and décolleté. Blend well.

NUE SKIN SCRUBBER + SONIC WAVE MACHINE

Cost Per Treatment

Product Item #	Product Cost	Cost Per Treatment
Enzyme Exfoliant papaya complex + LSS™ delivery	\$33.00	\$4.13 per treatment.
Conductivity Gel 8 oz.	\$14.00	\$1.77 per treatment
Oxygen Infusion Gel A, C, E complex phase 1	\$33.00	\$2.06 per treatment
Oxygen Infusion Gel brightening phase 1	\$33.00	\$2.06 per treatment
Oxygen Infusion activator phase 2	\$45.00	\$1.25 per treatment
Total Cost Per Treatment		\$11.27

The **number one spa treatment** is the number one most profit driven treatment for licensed professionals. You may build your treatments with other advanced performance therapies such as:

- Oxygen Infusion Treatment
- LED Light Therapy
- Nue Microdermabrasion
- Microcurrent

Advanced skin treatments are the building blocks for successful licensed skin care professionals. Incorporating innovative treatment techniques bring instant, long-term and healthy skin results.

Skin for Life brings innovation, quality and result-oriented products to licensed professionals.

NOTE'S SECTION:



15241 TELCOM DR.
BROOKSVILLE, FL 34604



No Animal Testing

©2019 all rights reserved
Skin for Life a division of Lifeline Medical, Inc.

(866) 312.7546 F06142019 Rev. 1