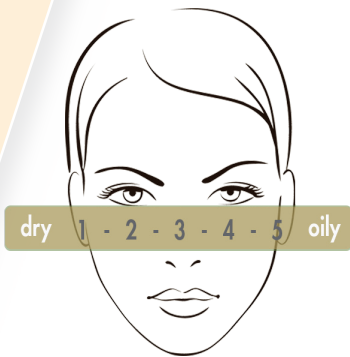


SKIN CARE PROTOCOLS



 skin for life

GENTLE MILK CLEANSER

vitamins A & E

Professional Product Instructions

pH 6.0

Professional Treatment Information

Gentle Milk Cleanser cleanses without dryness or dehydration. Soothes and nourishes the skin with vitamins A & E, aloe barbadensis leaf juice extract and Beta Glucan.

Gentle Milk Cleanser is for “Dry Skin Types” or with conditions that are dry skin related; such as, dehydration and sensitivity due to dryness. Flaky, chapped or peeling skin may be present. Skin may appear to have redness due to dehydration. Milia cysts and closed comedones may be present indicating tissue congestion.

Treatment Application Use

These are the Skin for Life steps, when using Gentle Milk Cleanser as a primary skin care product for a skin treatment.

- Apply 5 ml/1 teaspoon on dry skin. Massage for 1-2 minutes. This product is safe to use as an eye makeup remover. Moisten hands and massage for another minute. Remove with one of the below suggestions.

Additional Methods To Use With A Treatment:

- May use Rotary Facial Brush to cleanse the face for 1-2 minutes of use.
- May use Manual Facial Brush to cleanse the face for 1-2 minutes of use.
- May use Ultra Skin Scrubber Equipment. Keep skin moist throughout the application process.
- May use Steam for 5-7 minutes to soften skin.

May Remove Gentle Milk Cleanser with the following:

- Moistened Room Temperature Towel(s)
- Moistened Compressed Sponges
- Moistened Esthetic Gauze



Related Skin Conditions:

- Milia cysts
- Dryness due to over-cleansed skin or product use
- Inflamed capillaries
- Skin Peeling
- Dehydration
- Hormonal aging

Product Recommendations:

- Instant Soothing Toner natural actives
- Vita C Peptide Serum + LSS™ delivery
- Ultra performing Complex vitamins A, C, E + LSS™ delivery
- Moisture Complex nourishing peptides + LSS™ delivery

GENTLE GEL CLEANSER

soothing aloe

Professional Product Instructions

pH 6.0

Professional Treatment Information

Gentle Gel Cleanser dissolves makeup while keeping balanced skin fresh and clean. The natural essential nutrient of Aloe Barbadensis Leaf Juice Extract maintains water binding properties to prevent water loss in the upper epidermal layers of the skin.

Gentle Gel Cleanser is for “Dry, Oily or Sensitive Skin Types” or with conditions that are sensitive, reactive or intolerable due to internal or external related sensitivities. Skin may appear to have redness due to dehydration, over-cleansing and/or sensitivity to other products, foods or seasonal allergies. Capillaries may be dilated, skin may appear red or even have red bumps, dehydration due to loss of natural moisture and may have blemishes and/or breakouts due to follicular congestion.

Treatment Application Use

These are the Skin for Life steps, when using Gentle Gel Cleanser as a primary skin care product for a skin treatment.

- Apply 5 ml/1 teaspoon on dry skin. Massage for 1-2 minutes. Moisten hands and massage for another minute. Remove with one of the below suggestions.

Additional Methods To Use With A Treatment:

- May use Rotary Facial Brush to cleanse the face for 1-2 minutes of use.
- May use Manual Facial Brush to cleanse the face for 1-2 minutes of use.
- May use Ultra Skin Scrubber Equipment. Keep skin moist throughout the application process.
- May use Light Steam for 3-5 minutes to soften skin before extraction.

May Remove Gentle Gel Cleanser with the following:

- Moistened Room Temperature Towel(s)
- Moistened Compressed Sponges
- Moistened Esthetic Gauze



Related Skin Conditions:

- Redness
- Dryness due to over-cleansed skin or product use
- Inflamed capillaries
- Skin Peeling
- Dehydration
- Hormonal challenges

Product Recommendations:

- Instant Soothing Toner natural actives
- Vita C Peptide Serum + LSS™ delivery
- Vital Recovery Concentrate natural botanicals + LSS™ delivery
- SOL Defense SPF 30 Physical Sunscreen Natural, Medium or Dark

SALICYLIC GEL CLEANSER

clarifying solution

Professional Product Instructions

pH 4.0

Professional Treatment Information

Salicylic Gel Cleanser eliminates oily residue without dryness. Purifies skin while maintaining a natural moisture balance.

Salicylic Gel Cleanser is for “Combination or Oily Skin Types” or with conditions that are prone to moderate to severe acne. Skin may appear to have large pores, open and/or closed comedones, milia cyst, seborrhea or adult acne. Follicular congestion may present itself as papules and/or pustules.

Treatment Application Use

These are the Skin for Life steps, when using Salicylic Gel Cleanser as a primary skin care product for a skin treatment.

- Apply 5 ml/1 teaspoon on dry skin. Massage for 1-2 minutes. Moisten hands and massage for another minute. Remove with one of the below suggestions.

Additional Methods To Use With A Treatment:

- May use Rotary Facial Brush to cleanse the face for 1-2 minutes of use.
- May use Manual Facial Brush to cleanse the face for 1-2 minutes of use.
- May use Ultra Skin Scrubber Equipment. Keep skin moist throughout the application process.
- May use Steam for 5-7 minutes to soften skin before extraction.

May Remove Gentle Gel Cleanser with the following:

- Moistened Room Temperature Towel(s)
- Moistened Compressed Sponges
- Moistened Esthetic Gauze



Related Skin Conditions:

- Grade I-IV acne
- Cyst - Nodule Cyst
- Congested skin
- Oily skin
- Combination skin
- Hormonal breakouts
- Seborrhea
- Adult acne

Product Recommendations:

- Instant Soothing Toner natural actives or Salicylic Toner eucalyptus oil
- Moisture Booster hyaluronic acid + LSS™ delivery
- Antibac Essentials lysozyme protection + LSS™ delivery
- Vital Recovery Concentrate natural botanicals + LSS™ delivery
- Renewal Serum 10% lactic concentrate + LSS™ delivery

INSTANT SOOTHING TONER

natural botanicals

Professional Product Instructions

pH 5.5

Professional Treatment Information

Instant Soothing Toner Intensely refreshes and soothes sensitive skin. Restores skin softness and balance.

Instant Soothing Toner is for “Dry, Combination, Sensitive or Oily/Sensitive Skin Types” or with conditions that are prone to dehydration or lack of lipid protection. Skin may appear to have dryness, capillary distention, follicular congestion or the appearance of thin skin.

Treatment Application Use

These are the Skin for Life steps, when using Instant Soothing Toner as a primary skin care product for a skin treatment.

- Apply 2.5 ml/ 1/2 teaspoon on dry skin. May use as a spray or saturate cotton round or pad. Apply to face, neck and décolleté, as an even application. Dry skin before proceeding with additional skin care steps. Instant Soothing may be applied after cleansing, exfoliation and/or after mask removal; before applying final serum(s), moisturizer(s) and/or sunscreen.

Additional Methods To Use With A Treatment:

- Instant Soothing Toner may be applied to keep skin moist before or during Ultra Skin Scrubber treatment application.
- Instant Soothing Toner may be applied after conductivity gel or during microcurrent treatment application.

May apply Instant Soothing Toner with the following:

- Cotton rounds or pads
- Esthetic Gauze



Related Skin Conditions:

- Sensitive skin
- Oily/sensitive skin
- Dry skin
- Dehydration
- Combination skin
- Hormonal breakouts
- Cyst - Nodule Cyst

Product Recommendations:

- Vita C Peptide Serum + LSS™ delivery
- Moisture Booster hyaluronic acid + LSS™ delivery
- Vital Recovery Concentrate natural botanicals + LSS™ delivery
- Ultra Performing Complex vitamins A, C, E + LSS™ delivery
- Moisture Complex nourishing peptides + LSS™ delivery

SALICYLIC TONER

eucalyptus oil

Professional Product Instructions

pH5.0

Professional Treatment Information

Salicylic Toner re-balances the skin's pH. Delivers micro-exfoliation ingredients to prevent oil build-up and follicular congestion.

Salicylic Toner is for "Combination, Oily, or Acne Skin Types" or with conditions that are prone to breakouts, cystic or nodular cystic acne. Skin may appear to have follicular congestion, excessive oil production or skin may appear rough in texture.

Treatment Application Use

These are the Skin for Life steps when using Salicylic Toner as a primary skin care product for a skin treatment.

- Apply 2.5 ml/ 1/2 teaspoon on dry skin. May saturate a cotton round or pad. Apply to face, neck and décolleté, as an even application. Dry skin before proceeding with additional skin care steps. Salicylic Toner may be applied after cleansing, exfoliation and/or after mask removal and before applying final serum(s), moisturizer(s) and/or sunscreen.

Additional Methods To Use With A Treatment:

- Salicylic Toner may be used before Skin for Life Professional Peel System to remove all residue before Peel application.
- Salicylic Toner may be applied after waxing to prevent bumps or ingrown hairs.

May apply Salicylic Toner with the following:

- Cotton rounds or pads
- Esthetic Gauze



Related Skin Conditions:

- Oily/sensitive skin
- Oily skin
- Acne skin
- Seborrhea
- Combination skin
- Hormonal breakouts
- Cyst - Nodular Cyst

Product Recommendations:

- Moisture Booster hyaluronic acid + LSS™ delivery
- Antibac Essentials lysozyme protection + LSS™ delivery
- Vital Recovery Concentrate natural botanicals + LSS™ delivery
- Renewal Serum 10% lactic concentrate + LSS™ delivery
- Vita A Lift proscience technology

VITA C PEPTIDE SERUM

+ LSS™ delivery

Professional Product Instructions

pH8.0

Professional Treatment Information

Vita C Peptide Serum neutralizes the action of free-radicals. Reveals a radiant complexion and instantly smooths and redefines skin texture.

Vita C Peptide Serum is for “All Skin Types, Conditions and Colors”. Skin may appear to have photo-damage, wrinkles, thin skin, rough texture, capillary distention, dehydration, dry skin, oily skin or inflamed skin. Excellent for rosacea, psoriasis or eczema.

Treatment Application Use

These are the Skin for Life steps when using Vita C Peptide Serum as a primary skin care product for a skin treatment.

- Apply 1.25 ml/ 1/4 teaspoon on dry skin. Apply to face, neck and décolleté. May apply around the eye area for a hydrating eye serum. Massage until serum is absorbed. Proceed with skin treatment steps. May apply after exfoliation step (when appropriate) or before and after mask application.

Additional Methods To Use With A Treatment:

- Vita C Peptide Serum may be used as an eye treatment serum before massage.
- Vita C Peptide Serum is necessary before sunscreen application for added UV protection.

May apply Vita C Peptide Serum with the following:

- Manual application
- Facial mask brush



Related Skin Conditions:

- Sensitive skin
- Oily skin
- Dehydration
- Dry skin
- Capillary Distention
- Photo-damaged skin
- Solar lentigines
- Rosacea

Product Recommendations:

- Gentle Milk Cleanser vitamins A & E
- Gentle Gel Cleanser soothing aloe
- Instant Soothing Toner natural botanicals
- Vital Recovery Concentrate natural botanicals + LSS™ delivery
- Ultra Performing Complex vitamins A, C, E + LSS™ delivery
- SOL defense SPF 30 physical sunscreen

MOISTURE BOOSTER

hyaluronic acid+ LSS™ delivery

Professional Product Instructions

pH8.0

Professional Treatment Information

Moisture Booster optimizes hydration by engaging with the skin's natural hyaluronic acid. Provides additional moisture to prevent "TEWL" trans-epidermal water loss. Moisture Booster assists sebaceous glands by regulating oil production.

Moisture Booster is for "Dry, Oily or Combination Skin Types" or with conditions that are prone to dehydration, dryness or unbalanced oil production. Skin may appear to have dryness, rough texture, oily residue or a dull skin complexion.

Treatment Application Use

These are the Skin for Life steps when using Moisture Booster as a primary skin care product for a skin treatment.

- Apply 1.25 ml/ 1/4 teaspoon on dry skin. Apply to face, neck and décolleté. May apply around the eye area for a hydrating eye serum. Massage until serum is absorbed. Proceed with skin treatment steps. May apply after exfoliation step (when appropriate) or before and after mask application.

Additional Methods To Use With A Treatment:

- Moisture Booster may be used as an eye treatment serum, before massage.
- Moisture Booster is necessary before sunscreen application for added UV protection.

May apply Moisture Booster with the following:

- Manual application
- Facial mask brush



Related Skin Conditions:

- Sensitive skin
- Oily skin
- Inflamed skin
- Dehydration
- Dry skin
- Capillary Distention
- Photo-damaged skin
- Solar lentigines

Product Recommendations:

- Gentle Milk Cleanser vitamins A & E
- Gentle Gel Cleanser soothing aloe
- Instant Soothing Toner natural botanicals
- Antibac Essentials lysozyme protection + LSS™ delivery
- Vital Recovery Concentrate natural botanicals + LSS™ delivery
- SOL defense SPF 30 physical sunscreen

RENEWAL SERUM

10% lactic concentrate + LSS™ delivery

Professional Retail Product Instructions

pH 2.0

Professional Retail Product Information

Renewal Serum gently accelerates the removal of dead skin cells. Perfect performance product for all skin types. Refines texture, brightens and evens skin appearance. Skin is more receptive to other Skin for Life serums and moisturizers.

Renewal Serum is for “All Skin Types” or with conditions that are prone to dehydration, dryness, photo-aging, sensitivity or unbalanced oil production. Skin may appear to have thick stratum corneum, dryness, rough texture, oily residue, pigment discolorations or a dull skin complexion.

Retail Application Use

These are the Skin for Life home care instructions when using Renewal Serum 10% lactic concentrate as a daily or nightly exfoliation.

- Apply 1-2 pumps on dry clean skin. Apply to face, neck and décolleté. Blend well. Avoid the eye area. Apply additional serums, moisturizers and/or physical sunscreen after the Renewal Serum application.
- For oily skin types, Renewal Serum may be applied twice a day before other serums and/or moisturizers. However, do not apply when outside or with lengthy sun exposure.
- Sensitive skins may use Renewal Serum every other night and then build up to every night. This will help sensitive skins build a healthy skin immunity response.
- Non-sensitive skins may use Renewal Serum on a nightly basis before nighttime moisturizer.



Related Skin Conditions:

- Sensitive skin
- Oily skin
- Acne prone skin
- Dehydration
- Dry skin
- Capillary Distention
- Photo-aging skin
- Solar lentigines
- Rosacea

Product Recommendations:

- Gentle Gel Cleanser soothing aloe
- Salicylic Gel Cleanser clarifying solution
- Instant Soothing Toner natural botanicals
- Antibac Essentials lysozyme protection + LSS™ delivery
- Vital Recovery Concentrate natural botanicals + LSS™ delivery
- Ultra Performing Complex vitamins A, C, E + LSS™ delivery

VITA A LIFT

proscience technology

Professional Retail Product Instructions

Professional Retail Product Information

Vita A Lift optimizes cellular activity. Increases cellular energy for cell division and collagen stimulation.

Vita A Lift resurfaces skin discolorations, smooths wrinkles and fine lines. This performance retail skin care product enhances skin firmness and elasticity.

Vita A Lift is for “All Skin Types” or with conditions that are prone to dehydration, dryness, photo-aging, sensitivity or unbalanced oil production. Skin may appear to have a thick stratum corneum, dryness, rough texture, oily residue, pigment discolorations or a dull skin complexion.

Retail Application Use

These are the Skin for Life home care instructions when using Vita A Lift as a nightly performance renewal cream.

- Apply small amount on a dry clean skin. Apply to face, neck and décolleté. Blend well. Avoid the eye area. Apply Skin for Life moisturizer after the Vita A Lift application at night.
- Skin Performance Application (Night Only) - Apply 1-2 pumps of Renewal Serum on a clean dry skin. Apply to face, neck and décolleté. Blend well. Do Not Remove. Apply a small amount of Vita A Lift to face, neck and décolleté. Blend well. Apply Skin for Life moisturizer. Blend well.
- Sensitive skins may use Vita A Lift every other night and build up to every night. This will help sensitive skins build a healthy skin immunity response.
- Non-sensitive skins may use Vita A Lift on a nightly basis before nighttime moisturizer.



Related Skin Conditions:

- Sensitive skin
- Oily skin
- Acne prone skin
- Dehydration
- Dry skin
- Capillary Distention
- Wrinkles
- Fine lines

Product Recommendations:

- Gentle Gel Cleanser soothing aloe
- Salicylic Gel Cleanser clarifying solution
- Instant Soothing Toner natural botanicals
- Antibac Essentials lysozyme protection + LSS™ delivery
- Vital Recovery Concentrate natural botanicals + LSS™ delivery
- Ultra Performing Complex vitamins A, C, E + LSS™ delivery

VITA A + C

advanced proscience

Professional Retail Product Instructions

Professional Retail Product Information

Vita A + C prevents pigment discolorations caused by sun exposure. Inhibits tyrosinase, which is responsible for pigment irregularities.

Vita A + C resurfaces skin discolorations. Brightens skin complexions while smoothing wrinkles and fine lines. This performance retail skin care product enhances skin firmness and elasticity.

Vita A + C is for “Dry, Combination or Sensitive Skin Types” or with conditions that are prone to hyper-pigmentation, photo-aging, melasma, chloasma or solar lentigines. Skin may appear to have thick stratum corneum, dryness, age spots, pigment discolorations, irregular skin color or a dull skin complexion.

Retail Application Use

These are the Skin for Life home care instructions when using Vita A + C as a nightly performance brightening cream.

- Apply small amount on a dry clean skin. Apply to face, neck and décolleté. Blend well. Avoid the eye area. Apply Skin for Life moisturizer after the Vita A + C application at night.
- Skin Performance Application (Night Only) - Apply 1-2 pumps of Renewal Serum on a clean dry skin. Apply to face, neck and décolleté. Blend well. Do Not Remove. Apply a small amount of Vita A + C to face, neck and décolleté. Blend well. Apply Skin for Life moisturizer. Blend well.
- Sensitive skins may use Vita A + C every other night and build up to every night. This will help sensitive skins build a healthy skin immunity response.
- Non-sensitive skins may use Vita A + C on a nightly basis before nighttime moisturizer.



Related Skin Conditions

- Dehydration
- Dry skin
- Combination skin
- Hyper-pigmentation
- Melasma
- Chloasma
- Solar lentigines
- Wrinkles
- Fine lines

Product Recommendations:

- Gentle Gel Cleanser soothing aloe
- Salicylic Gel Cleanser clarifying solution
- Instant Soothing Toner natural botanicals
- Renewal Serum 10% lactic concentrate + LSS™ delivery
- Vital Recovery Concentrate natural botanicals + LSS™ delivery
- Moisture Complex nourishing peptides + LSS™ delivery

Antibac Essentials

lysozyme protection + LSS™ delivery

Professional Product Instructions

pH 4.5

Professional Product Information

Antibac Essentials is a light-weight antibacterial moisturizer. Reduces breakouts and follicular congested skin.

Antibac Essentials protects skin from over-cleansing and over-exfoliating. Balances oil production while repairing and healing skin. Antibac Essentials fights against oxidation which is a contributing factor for open and closed comedones. Lysozyme is derived from “egg whites” and is a powerful P-acne bacteria fighter.

Antibac Essentials is for “Combination or Oily Skin Types” or with conditions that are prone to oily, acne or unbalanced oil production. Skin may appear to have rough texture, oily residue, acne lesions or seborrheic skin.

Professional Treatment Application Use

These are the Skin for Life steps when using Antibac Essentials as a primary skin care product for a skin treatment.

- Apply 5 ml/ 1 teaspoon after the Skin for Life Performance Serum Application. Apply to face, neck and décolleté. Blend well. May be used in target areas of concern. May apply before Vital Recovery Concentrate as a treatment moisturizer for additional skin repair. Proceed with skin treatment steps. May apply before and after mask application for continued healing and repair.

Additional Professional Companion Products for Treatment Success:

- Salicylic Gel Cleanser clarifying solution
- Salicylic Toner eucalyptus oil
- Enzyme Exfoliant papaya complex + LSS™ delivery
- Moisture Booster hyaluronic acid + LSS™ delivery
- Vital Recovery Concentrate botanical lipids + LSS™ delivery
- Anti Pollution Mask - peel off mask (professional use only)



Related Skin Conditions

- Oily skin
- Acne skin
- Combination skin
- Seborrheic dermatitis
- Keratosis pilaris
- Adult acne
- Cystic acne
- Nodular cyst

Product Recommendations:

- Salicylic Gel Cleanser clarifying solution
- Salicylic Toner eucalyptus oil
- Renewal Serum 10% lactic concentrate + LSS™ delivery
- Moisture Booster hyaluronic acid + LSS™ delivery
- Vital Recovery Concentrate botanical lipids + LSS™ delivery
- SOL defense SPF 30

VITAL RECOVERY CONCENTRATE

botanical lipids + LSS™ delivery

Professional Product Instructions

pH 5.0

Professional Product Information

Vital Recovery protects and nourishes skin. Balances skin and restores vitality.

Vital Recovery prevents premature aging by delivering firming enriched ingredients. Strengthens skin's natural defenses by rebuilding the skin's integrity with our special growth peptide formula.

Vital Recovery Concentrate is for "All Skin Types" or with conditions that are prone to dehydration, dryness, sensitivities or unbalanced oil production. Skin may appear to have dryness, dehydration, redness, mild breakout, oily residue or a dull skin complexion.

Professional Treatment Application Use

These are the Skin for Life steps when using Vital Recovery Concentrate as a primary skin care product for a skin treatment.

- Apply 5 ml/ 1 teaspoon after the Skin for Life Performance Serum Application. Apply to face, neck and décolleté. Blend well. May use as a healing cream for sensitive skins. Proceed with skin treatment steps. May apply before and after mask application for continued healing and repair.

Additional Professional Companion Products for Treatment Success:

- Gentle Milk Cleanser vitamins A & E
- Instant Soothing Toner natural botanicals
- Enzyme Exfoliant papaya complex + LSS™ delivery
- Vita C Peptide Serum + LSS™ delivery
- Ultra Performing Complex vitamins A, C, E + LSS™ delivery
- CryoAlgae Mask - peel off mask + CryoAlgae Booster - mask activator



Related Skin Conditions

- Oily skin
- Acne skin
- Combination skin
- Rosacea
- Sensitive skin
- Eczema
- Hyper-pigmentation
- Melasma

Product Recommendations:

- Gentle Gel Cleanser soothing aloe
- Instant Soothing Toner natural botanicals
- Vita C Peptide + LSS™ delivery
- Moisture Booster hyaluronic acid + LSS™ delivery
- Moisture Complex nourishing peptides + LSS™ delivery
- SOL defense SPF 30

ULTRA PERFORMING COMPLEX

vitamins A, C, E + LSS™ delivery

Professional Product Instructions

pH 7.5

Professional Product Information

Ultra Performing Complex improves skin firmness, maintains optimal moisture and lipid balance.

Ultra Performing Complex nourishes and protects skin against external aggressions. Repairs the skin's lipid mantle. Prevents premature aging by delivering firming enriched ingredients. Ultra Performing contains essential vitamins such as, vitamin A, B, D and E; known for their rejuvenation and antioxidant properties.

Ultra Performing Complex is for "Dry, Combination or Sensitive Skin Types" or with conditions that are prone to dehydration, moderate to severe dryness or lack of skin elasticity. Skin may appear to have dryness, dehydration, redness, capillary distention, sagging skin or a dull skin complexion.

Professional Treatment Application Use

These are the Skin for Life steps when using Ultra Performing Complex as a primary skin care product for a skin treatment.

- Apply 5 ml/ 1 teaspoon after the Skin for Life Performance Serum Application. Apply to face, neck and décolleté. Blend well. May use as an intensive neck cream for sagging skin. Proceed with skin treatment steps. May apply before and after mask application for continued firming action.

Additional Professional Companion Products for Treatment Success:

- Gentle Milk Cleanser vitamins A & E
- Instant Soothing Toner natural botanicals
- Enzyme Exfoliant papaya complex + LSS™ delivery
- Vita C Peptide Serum + LSS™ delivery
- Moisture Complex nourishing peptides + LSS™ delivery
- CryoAlgae Mask - peel off mask + CryoAlgae Booster - mask activator



Related Skin Conditions

- Dry skin
- Sensitive skin
- Eczema
- Psoriasis
- Chronic dry skin
- Dehydration
- Chapped skin
- Skin aging

Product Recommendations:

- Gentle Milk Cleanser vitamins A & E
- Instant Soothing Toner natural botanicals
- Vita C Peptide + LSS™ delivery
- Moisture Booster hyaluronic acid + LSS™ delivery
- Moisture Complex nourishing peptides + LSS™ delivery
- SOL defense SPF 30

MOISTURE COMPLEX

nourishing peptides + LSS™ delivery

Professional Product Instructions

Professional Product Information

Moisture Complex strengthens skin's natural defenses. This silky texture adds a second skin to prevent moisture loss. This unique formula is a strong barrier for skin recovery.

Moisture Complex nourishes and protects skin against external aggressions. Repairs the skin's lipid mantle. Prevents premature aging by delivering water binding ingredients. Plumps and smooths fine lines and wrinkles.

Moisture Complex is for "All Skin Types" or with conditions that are prone to dehydration, moderate to severe dryness or lack of skin elasticity. Skin may appear to have dryness, dehydration, redness, capillary distention, sagging skin or a dull skin complexion.

Professional Treatment Application Use

These are the Skin for Life steps when using Moisture Complex as a primary skin care product for a skin treatment.

- Apply 2.5 ml/ ½ teaspoon after Vital Recovery or Ultra Performing Application. Apply to face, neck and décolleté. Blend well. May use as an intensive neck cream for sagging skin. May use as a massage medium with massage techniques. Proceed with skin treatment steps. May apply before and after mask application for continued firming action. May use as a lip and an eye balm after serum application.

Additional Professional Companion Products for Treatment Success:

- Gentle Milk Cleanser vitamins A & E
- Instant Soothing Toner natural botanicals
- Enzyme Exfoliant papaya complex + LSS™ delivery
- Vita C Peptide Serum + LSS™ delivery
- Ultra Performing Complex vitamins A, C, E + LSS™ delivery
- CryoAlgae Mask - peel off mask + CryoAlgae Booster - mask activator



Related Skin Conditions

- Dry skin
- Combination skin
- Sensitive skin
- Eczema
- Psoriasis
- Chronic dry skin
- Dehydration
- Skin aging

Product Recommendations:

- Gentle Milk Cleanser vitamins A & E
- Instant Soothing Toner natural botanicals
- Vita C Peptide + LSS™ delivery
- Moisture Booster hyaluronic acid + LSS™ delivery
- Vita A+C advanced proscience
- Ultra Performing Complex vitamins A, C, E + LSS™ delivery

SOL DEFENSE SPF 30 PHYSICAL SUNSCREEN

natural tint

Professional Product Instructions

Professional Product Information

SOL defense SPF 30 revives skin complexion and maintains a daily radiant glow. Smooths fine lines, wrinkles and gives a youthful appearance. A physical water resistant sunscreen protection for people with active lifestyles.

SOL defense SPF 30 may be used as a makeup primer to smooth a skins' complexion before applying their favorite foundation. Protects the skin against daily UV exposure while providing skin with a flawless finish.

SOL defense SPF 30 is for "All Skin Types" or with conditions that are prone to dehydration, sun damage, uneven texture, or a dull skin complexion. Skin may appear to have dryness, dehydration, redness, capillary distention, pigment demarcation or a sallow complexion.

Professional Treatment Application Use

These are the Skin for Life steps when using SOL defense SPF 30 as a primary skin care product for a skin treatment.

- Apply 2.5 ml/ 1/2 teaspoon as the final treatment step after a Skin for Life moisturizer application. Apply to face, neck and décolleté. Blend well. May use on face and body for sunscreen protection.

Additional Professional Companion Products for Treatment Success:

- Select an appropriate Skin for Life Cleanser
- Select an appropriate Skin for Life Toner
- Enzyme Exfoliant papaya complex + LSS™ delivery
- Select an appropriate Skin for Life Serum(s)
- Select an appropriate Skin for Life Moisturizer(s)



Related Skin Conditions

- Dry skin
- Combination skin
- Sensitive skin
- Oily skin
- Eczema
- Seborrhea
- Demarcation line
- Acne prone skin

Product Recommendations:

- Gentle Gel Cleanser soothing aloe
- Instant Soothing Toner natural botanicals
- Vita C Peptide + LSS™ delivery
- Antibac Essentials lysozyme protection + LSS™ delivery
- Vital Recovery Concentrate botanical lipids + LSS™ delivery
- Ultra Performing Complex vitamins A, C, E + LSS™ delivery

SOL DEFENSE SPF 30 PHYSICAL SUNSCREEN

medium tint

Professional Product Instructions

Professional Product Information

SOL defense SPF 30 revives skin complexion and maintains a daily radiant glow. Smooths fine lines, wrinkles and gives a youthful appearance. A physical water resistant sunscreen protection for people with active lifestyles.

SOL defense SPF 30 may be used as a makeup primer to smooth a skins' complexion before applying their favorite foundation. Protects the skin against daily UV exposure while providing skin with a flawless finish.

SOL defense SPF 30 is for "All Skin Types" or with conditions that are prone to dehydration, sun damage, uneven texture, or a dull skin complexion. Skin may appear to have dryness, dehydration, redness, capillary distention, pigment demarcation or a sallow complexion.

Professional Treatment Application Use

These are the Skin for Life steps when using SOL defense SPF 30 as a primary skin care product for a skin treatment.

- Apply 2.5 ml/ 1/2 teaspoon as the final treatment step after a Skin for Life moisturizer application. Apply to face, neck and décolleté. Blend well. May use on face and body for sunscreen protection.

Additional Professional Companion Products for Treatment Success:

- Select an appropriate Skin for Life Cleanser
- Select an appropriate Skin for Life Toner
- Enzyme Exfoliant papaya complex + LSS™ delivery
- Select an appropriate Skin for Life Serum(s)
- Select an appropriate Skin for Life Moisturizer(s)



Related Skin Conditions

- Dry skin
- Combination skin
- Sensitive skin
- Oily skin
- Eczema
- Seborrhea
- Demarcation line
- Acne prone skin

Product Recommendations:

- Gentle Gel Cleanser soothing aloe
- Instant Soothing Toner natural botanicals
- Moisture Booster hyaluronic acid + LSS™ delivery
- Vital Recovery Concentrate botanical lipids + LSS™ delivery
- Ultra Performing Complex vitamins A, C, E + LSS™ delivery
- Moisture Complex nourishing peptides + LSS™ delivery

SOL DEFENSE SPF 30 PHYSICAL SUNSCREEN

dark tint

Professional Product Instructions

Professional Product Information

SOL defense SPF 30 revives skin complexion and maintains a daily radiant glow. Smooths fine lines, wrinkles and gives a youthful appearance. A physical water resistant sunscreen protection for people with active lifestyles.

SOL defense SPF 30 may be used as a makeup primer to smooth a skins' complexion before applying their favorite foundation. Protects the skin against daily UV exposure while providing skin with a flawless finish.

SOL defense SPF 30 is for "All Skin Types" or with conditions that are prone to dehydration, sun damage, uneven texture, or a dull skin complexion. Skin may appear to have dryness, dehydration, redness, capillary distention, pigment demarcation or a sallow complexion.

Professional Treatment Application Use

These are the Skin for Life steps when using SOL defense SPF 30 as a primary skin care product for a skin treatment.

- Apply 2.5 ml/ 1/2 teaspoon as the final treatment step after a Skin for Life moisturizer application. Apply to face, neck and décolleté. Blend well. May use on face and body for sunscreen protection.

Additional Professional Companion Products for Treatment Success:

- Select an appropriate Skin for Life Cleanser
- Select an appropriate Skin for Life Toner
- Enzyme Exfoliant papaya complex + LSS™ delivery
- Select an appropriate Skin for Life Serum(s)
- Select an appropriate Skin for Life Moisturizer(s)



Related Skin Conditions

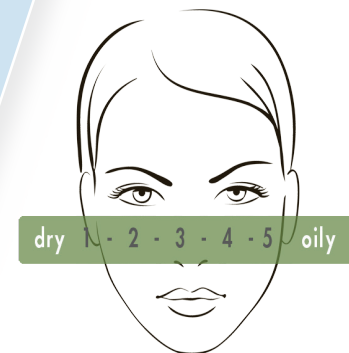
- Dry skin
- Combination skin
- Sensitive skin
- Oily skin
- Eczema
- Seborrhea
- Demarcation line
- Acne prone skin

Product Recommendations:

- Salicylic Gel Cleanser clarifying solution
- Salicylic Toner eucalyptus oil
- Moisture Booster hyaluronic acid + LSS™ delivery
- Antibac Essentials lysozyme protection + LSS™ delivery
- Vital Recovery Concentrate botanical lipids + LSS™ delivery
- Vita A Lift proscience technology

PROFESSIONAL

USE ONLY
PROTOCOLS



 skin for life

ENZYME EXFOLIANT

papaya complex + LSS™ delivery

Professional Product Instructions

pH 5.5

Professional Product Information

Enzyme Exfoliant papaya complex is known for its rejuvenating properties. Our papaya complex gently removes dead skin cells without sensitivity. This natural fruit digests debris while revealing a healthy glowing complexion.

Enzyme Exfoliant softens follicular congested skin and effectively treats hyper-pigmentation, melasma, chloasma or solar lentigines. Enzyme Exfoliant may be used safely on all skin types, conditions and colors.

Enzyme Exfoliant papaya complex is for “All Skin Types” or with conditions that are prone to oily, acne, follicular congestion, photo-aging, melasma, hyper-pigmentation, rosacea, psoriasis or facial rhytides (wrinkles).

Professional Treatment Application Use

These are the Skin for Life steps when using Enzyme Exfoliant papaya complex as a primary skin care product for a skin treatment.

- Apply 15 ml/ 1 tablespoon on dry skin. Apply an even application to face, neck and décolleté with a facial mask brush. Avoid eye area. Massage for 1-2 minutes without adding water. Moisten hands and massage for another 2-3 minutes. Leave Enzyme Exfoliant on for 5-7 minutes. Remove with one of the below suggestions.

Additional Methods To Use With A Treatment:

- May use with Steam for 3-5 minutes to soften skin before extractions.
- May use Ultra Skin Scrubber Equipment. Keep skin moist throughout the application process.

May Remove Enzyme Exfoliant with the following:

- Moistened Room Temperature Towel(s)
- Moistened Compressed Sponges
- Moistened Esthetic Gauze



Related Skin Conditions

- Dry skin
- Combination skin
- Sensitive skin
- Oily skin
- Seborrhea
- Acne prone skin
- Facial rhytides (wrinkles)
- Photo-aging

Product Recommendations:

- Gentle Gel Cleanser soothing aloe
- Instant Soothing Toner natural actives
- Renewal Serum 10% lactic concentrate + LSS™ delivery
- Vital Recovery Concentrate botanical lipids + LSS™ delivery
- Vita A + C advanced proscience
- SOL defense SPF 30 physical sunscreen

PRO RADIANCE PEEL

active brighteners + LSS™ delivery

Professional Product Instructions

pH2.0

Professional Product Information

Pro Radiance Peel is a lactic acid peel with active brighteners of Kojic acid, Licorice extract and Bearberry extract. This cosmetic acid is not only a preparation for other acid peels, it is a beautiful peel that may be used as a stand alone treatment.

This lactic acid peel has a pH of 2.0 and is completely safe and effective as a leave on acid peel. This cosmetic acid treatment does not have to be removed. The innovative ingredients make it effective for all skin including sensitive skin.

Pro Radiance Peel is for “All Skin Types” or with conditions that are prone to oily, acne, follicular congestion, photo-aging, melasma, hyper-pigmentation, rosacea or facial rhytides (wrinkles).

Professional Treatment Application Use

These are the Skin for Life steps when using Pro Radiance Peel as a primary skin care product for a skin treatment.

- Apply 15 ml/ 1 tablespoon on dry skin. Apply an even application to face, neck and décolleté with esthetic gauze. Avoid eye area. DO NOT REMOVE. Proceed with skin care treatment steps.

Additional Methods To Use With A Treatment:

- May use after Microdermabrasion as a double exfoliation to treat pigmentation concerns.
- May use before conductivity gel with Ultra Skin Scrubber Equipment. Keep skin moist throughout the application process.



Related Skin Conditions

- Dry skin
- Combination skin
- Sensitive skin
- Oily skin
- Seborrhea
- Acne prone skin
- Facial rhytides (wrinkles)
- Photo-aging
- Rosacea

Product Recommendations:

- Gentle Gel Cleanser soothing aloe
- Instant Soothing Toner natural actives
- Moisture Booster hyaluronic acid + LSS™ delivery
- Vital Recovery Concentrate botanical lipids + LSS™ delivery
- Vita A + C advanced proscience
- SOL defense SPF 30 physical sunscreen

PROFESSIONAL PEEL

salicylic, lactic, citric + LSS™ delivery

Professional Product Instructions

pH3.0

Professional Product Information

Professional Peel is our blended formula of lactic, salicylic and citric acid. This performance driven AHA/BHA treatment is designed for acne, pigmentation or environmentally damaged skin.

Beta Hydroxy acid is excellent when treating acne and congested skins. Alpha Hydroxy acid brightens and effectively eliminates the cohesion of dead skin cells. This unique formula has a pH of 3.0. However, when activated the pH lowers to 1.7. Formulated for Fitzpatrick Skin Type I-V

Professional Peel is for “All Skin Types” or with conditions that are prone to oily, acne, follicular congestion, photo-aging, melasma, hyper-pigmentation, rosacea or facial rhytides (wrinkles).

Professional Treatment Application Use

These are the Skin for Life steps when using Professional Peel as a primary skin care product for a skin treatment.

- Apply 15 ml/ 1 tablespoon on dry skin after Pro Radiance Peel Application. Apply an even application to face, neck and décolleté with esthetic gauze or cotton rounds. Avoid eye area. Please Refer to Treatment Protocol. Proceed with skin care treatment steps.

Additional Methods To Use With A Treatment:

- May use after Microdermabrasion as a double exfoliation to treat pigmentation or acne concerns.

May Remove Professional Peel with the following:

- Moistened Compressed Sponges
- Moistened Esthetic Gauze



Related Skin Conditions

- Dry skin
- Combination skin
- Oily skin
- Seborrhea
- Acne prone skin
- Facial rhytides (wrinkles)
- Photo-aging
- Melasma
- Hyper-pigmentation

Product Recommendations:

- Gentle Gel Cleanser soothing aloe
- Instant Soothing Toner natural actives
- Moisture Booster hyaluronic acid + LSS™ delivery
- Vita C Peptide Serum + LSS™ delivery
- Vital Recovery Concentrate botanical lipids + LSS™ delivery
- Vita A Lift proscience technology
- SOL defense SPF 30 physical sunscreen

PROFESSIONAL PEEL

salicylic, lactic, citric + LSS™ delivery

Professional Protocol Instructions

pH3.0

TREATMENT PREPARATION STEPS

- Make sure skin is thoroughly cleansed. Dry well.
- Apply “Pro Radiance Peel” with a 4 x 4 gauze to face, neck and décolleté.
- May apply up to 3 layers to complete the application.
- Do Not Remove - This is a leave on cosmetic acid peel.
- Dry skin thoroughly
- Pour approximately 1 tablespoon of Professional Peel into a small glass bowl
- Saturate a 4 x 4 gauze.
- You may use no more than 4 layers to face and décolleté. 2 layers on the neck.

PROFESSIONAL PEEL APPLICATION

- Apply Professional Peel to one area at a time using no more than 4 layers.
- Wait 30 seconds to 1 minute. Saturate a new gauze pad with ice cold water and press the cold moistened gauze onto the treated area. Repeat until there is no sensation of peel activity.
- Dry skin thoroughly.
- Proceed to the next untreated area. Repeat above steps.
- Once face, neck and décolleté are completed, use Instant Soothing Toner natural actives then proceed with the remaining skin care treatment steps.

Note

You may increase the time with each treatment. May not exceed more than 10 minutes for the complete Professional Peel Application.

OXYGEN INFUSION

A, C, E complex + LSS™ delivery phase 1

Professional Product Instructions

pH3.5

Professional Product Information

Oxygen A,C,E complex has powerful antioxidants to enhance the skin's protection against external environmental factors. Our antioxidant formulation softens and improves wrinkles, fine lines and has age defying results.

A, C, E complex is excellent as an anti-aging infusion treatment. This performance treatment may be used as a stand alone treatment. You may schedule treatments twice a week for 3 weeks for optimal age defying skin results. Incorporate our Oxygen Infusion A, C, E complex with other treatments such as microdermabrasion, microcurrent, ultra skin scrubber and much more.

Oxygen Infusion A,C,E complex is for "Dry, Combination or Oily Skin Types" or with conditions that are prone to wrinkles, fine lines, lack of elasticity, sagging skin, photo-aging or a dull skin complexion.

Professional Treatment Application Use

These are the Skin for Life steps when using Oxygen Infusion A, C, E complex as a primary skin care product for a skin treatment.

- Apply 7.5 ml/ 1 ½ teaspoon on dry skin after an exfoliation application. Apply an even medium-thick application to face, neck and décolleté with a facial mask brush. Avoid eye area. Please Refer to Treatment Protocol Below. Proceed with skin care treatment steps.

Additional Methods To Use With A Treatment:

- May use after Microdermabrasion, Ultra Skin Scrubber or Professional Peel System.
- May use before Microcurrent application to increase skin flexibility and muscle activity. Oxygen Infusion allows skin to stay hydrated and more receptive to microcurrent frequencies.

May Remove A, C, E complex with the following:

- Moistened Room Temperature Towel(s)
- Moistened Compressed Sponges



Related Skin Conditions

- Dry skin
- Combination skin
- Oily skin
- Dehydration
- Fine lines
- Facial rhytides (wrinkles)
- Skin sagging
- Lack of collagen support

Product Recommendations:

- Gentle Milk Cleanser vitamins A & E
- Instant Soothing Toner natural actives
- Renewal Serum 10% lactic concentrate + LSS™ delivery
- Ultra Performing Complex A, C, E complex + LSS™ delivery
- Moisture Complex nourishing peptides + LSS™ delivery
- SOL defense SPF 30 physical sunscreen

OXYGEN INFUSION

A, C, E complex + LSS™ delivery phase 1 Professional Protocol Instructions

pH3.5

TREATMENT PREPARATION STEPS

- Make sure skin is thoroughly cleansed. Dry well.
- Proceed with an “Exfoliation Application”. Use skin care products or machine application.
- Remove “Exfoliation Application” per treatment instructions.
- Apply Instant Soothing Toner natural actives.
- Dry skin thoroughly.
- Proceed with Oxygen Infusion A, C, E complex protocol application below.

OXYGEN INFUSION A, C, E COMPLEX APPLICATION

- Apply an even medium-thick application to face, neck and décolleté with a facial mask brush.
- Use effleurage and lifting massage movements. Massage for 1-2 minutes. This will excite the skin’s receptivity. Do Not Remove.
- Pour 5 ml/ 1 teaspoon of Oxygen Infusion activator phase 2 into an airbrush applicator cup.
- Start with airbrush movements. Use small to medium circular movements over the Oxygen Infusion A, C, E complex phase 1.
- Make at least 3 passes while manipulating the Oxygen Infusion A, C, E complex with finger tips. This will ensure a thorough application.
- Once completed, massage for another 1-2 minutes using effleurage and lifting massage movements.
- Remove with moistened room temperature towel(s) or compressed sponges.
- Follow with Instant Soothing Toner natural actives.
- Proceed with skin care treatment steps.

NOTE

Oxygen Infusion A, C, E complex

- May be used in a series of 6 - 12 treatments for optimal skin change.
- May be used in conjunction with other skin care treatments for immediate skin results.

OXYGEN INFUSION

antibacterial + LSS™ delivery phase 1

Professional Product Instructions

pH3.5

Professional Product Information

Oxygen antibacterial supports skin through oily and stressful active conditions. Creates an oxygenated environment to minimize P-acne activity. The ingredient that makes the “True Skin Difference” is Lysozyme Protection. Lysozyme is derived from “egg whites” and assists the skin by regulating sebaceous activity and fighting against acne causing bacteria.

Oxygen Infusion antibacterial is excellent as an oily/acne skin treatment. This performance treatment may be used as a stand alone treatment. You may schedule treatments twice a week for 3 weeks for optimal clear skin results. Incorporate our Oxygen Infusion antibacterial with other treatments such as microdermabrasion (non-inflamed skin), enzymes, ultra skin scrubber or professional peel system.

Oxygen Infusion antibacterial is for “Combination or Oily Skin Types” or with conditions that are prone to hormonal breakouts, acne prone skin, follicular congestion, milia cyst or open and closed comedones.

Professional Treatment Application Use

These are the Skin for Life steps when using Oxygen Infusion antibacterial as a primary skin care product for a skin treatment.

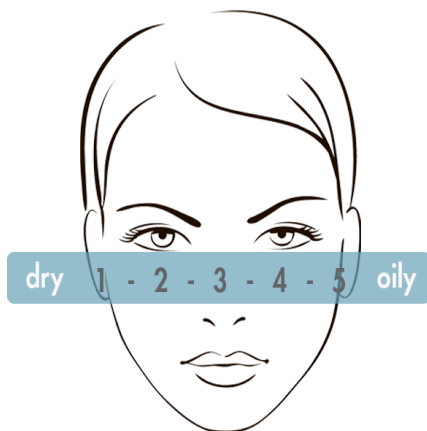
- Apply 7.5 ml/ 1 ½ teaspoon on dry skin after an exfoliation application. Apply an even medium-thick application to face, neck and décolleté with a facial mask brush. Avoid eye area. Please Refer to Treatment Protocol Below. Proceed with skin care treatment steps.

Additional Methods To Use With A Treatment:

- May use after Microdermabrasion, Enzyme Exfoliant papaya complex, Ultra Skin Scrubber or Professional Peel System.

May Remove Oxygen antibacterial with the following:

- Moistened Room Temperature Towel(s)
- Moistened Compressed Sponges



Related Skin Conditions

- Combination skin
- Oily skin
- Follicular congestion
- Open and closed comedones
- Acne or acne scarring
- Hormonal breakouts
- Milia cyst
- Cystic or Nodular cyst

Product Recommendations:

- Salicylic Gel Cleanser clarifying solution
- Salicylic Toner eucalyptus oil
- Renewal Serum 10% lactic concentrate + LSS™ delivery
- Antibac Essentials lysozyme protection + LSS™ delivery
- Vital Recovery Concentrate botanical lipids + LSS™ delivery
- SOL defense SPF 30 physical sunscreen

OXYGEN INFUSION

antibacterial + LSS™ delivery phase 1

Professional Protocol Instructions

pH3.5

TREATMENT PREPARATION STEPS

- Make sure skin is thoroughly cleansed. Dry well.
- Proceed with an “Exfoliation Application”. Use skin care products or machine application.
- Remove “Exfoliation Application” per treatment instructions.
- Apply Instant Soothing Toner natural actives or Salicylic Toner eucalyptus oil .
- Dry skin thoroughly.
- Proceed with Oxygen Infusion antibacterial protocol application below.

OXYGEN INFUSION ANTIBACTERIAL APPLICATION

- Apply an even medium-thick application to face, neck and décolleté with a facial mask brush.
- Use effleurage and petrissage massage movements. Massage for 1-2 minutes. This will excite the skin’s receptivity. Do Not Remove.
- Pour 5 ml/ 1 teaspoon of Oxygen Infusion activator phase 2 into an airbrush applicator cup.
- Start with airbrush movements. Use small to medium circular movements over the Oxygen Infusion antibacterial phase 1.
- Make at least 3 passes while manipulating the Oxygen Infusion antibacterial with finger tips. This will ensure a thorough application.
- Once completed, massage for another 1-2 minutes using effleurage and petrissage massage movements.
- Remove with moistened room temperature towel(s) or compressed sponges.
- Follow with Instant Soothing Toner natural actives or Salicylic Toner eucalyptus oil.
- Proceed with skin care treatment steps.

NOTE

Oxygen Infusion antibacterial

- May be used in a series of 6 - 12 treatments for optimal skin change.
- May be used in conjunction with other skin care treatments for immediate skin results.

OXYGEN INFUSION

brightening + LSS™ delivery phase 1

Professional Product Instructions

pH3.5

Professional Product Information

Oxygen brightening has three powerful brighteners: Kojic acid, Bearberry extract and Licorice extract. Our brighteners are safe and effective for all skin. Allows all skin types, conditions and colors a chance for an even skin complexion.

Oxygen Infusion brightening is excellent for melasma, hyper-pigmentation, chloasma or solar lentigines. This performance treatment may be used as a stand alone treatment. You may schedule treatments twice a week for 3 weeks for optimal illuminating skin results. Incorporate our Oxygen Infusion brightening with other treatments such as microdermabrasion, enzymes, ultra skin scrubber or professional peel system.

Oxygen Infusion brightening is for “All Skin Types” or with conditions that are prone to hormonal pigmentation, melasma, chloasma, solar lentigines, or facial demarcation lines.

Professional Treatment Application Use

These are the Skin for Life steps when using Oxygen Infusion brightening as a primary skin care product for a skin treatment.

- Apply 7.5 ml/ 1 ½ teaspoon on dry skin after an exfoliation application. Apply an even medium-thick application to face, neck and décolleté with a facial mask brush. Avoid eye area. Please Refer to Treatment Protocol Below. Proceed with skin care treatment steps.

Additional Methods To Use With A Treatment:

- May use after Microdermabrasion, Enzyme Exfoliant papaya complex, Ultra Skin Scrubber or Professional Peel System.
- May use before Microcurrent application to increase skin flexibility and muscle activity. Oxygen Infusion brightening allows skin to stay hydrated and more receptive to microcurrent frequencies.

May Remove Oxygen brightening with the following:

- Moistened Room Temperature Towel(s)
- Moistened Compressed Sponges



Related Skin Conditions

- Dehydration
- Dry skin
- Hormonal pigmentation
- Melasma
- Chloasma
- Hyper-pigmentation
- Facial demarcation lines

Product Recommendations:

- Gentle Gel Cleanser soothing aloe
- Instant Soothing Toner natural actives
- Vita C Peptide Serum + LSS™ delivery
- Vita A + C advanced proscience
- Vital Recovery Concentrate botanical lipids + LSS™ delivery
- SOL defense SPF 30 Sunscreen

OXYGEN INFUSION

brightening + LSS™ delivery phase 1

Professional Protocol Instructions

pH3.5

TREATMENT PREPARATION STEPS

- Make sure skin is thoroughly cleansed. Dry well.
- Proceed with an “Exfoliation Application”. Use skin care products or machine application.
- Remove “Exfoliation Application” per treatment instructions.
- Apply Instant Soothing Toner natural actives.
- Dry skin thoroughly.
- Proceed with Oxygen Infusion brightening protocol application below.

OXYGEN INFUSION BRIGHTENING APPLICATION

- Apply an even medium-thick application to face, neck and décolleté with a facial mask brush.
- Use effleurage and lifting massage movements. Massage for 1-2 minutes. This will excite the skin’s receptivity. Do Not Remove.
- Pour 5 ml/ 1 teaspoon of Oxygen Infusion activator phase 2 into an airbrush applicator cup.
- Start with airbrush movements. Use small to medium circular movements over the Oxygen Infusion brightening phase 1.
- Make at least 3 passes while manipulating the Oxygen Infusion brightening with finger tips. This will ensure a thorough application.
- Once completed, massage for another 1-2 minutes using effleurage and lifting massage movements.
- Remove with moistened room temperature towel(s) or compressed sponges.
- Follow with Instant Soothing Toner natural actives.
- Proceed with skin care treatment steps.

NOTE

Oxygen Infusion brightening

- May be used in a series of 6 - 12 treatments for optimal skin change.
- May be used in conjunction with other skin care treatments for immediate skin results.

OXYGEN INFUSION

sensitive + LSS™ delivery

Professional Product Instructions

pH3.5

Professional Product Information

Oxygen sensitive makes it possible for sensitive skin to experience cooling and calming healthy skin results. Chamomile, Bisabolol and Sigesbeckia Orientalis desensitize skin irritations, redness and intolerable skin conditions.

Oxygen Infusion sensitive is excellent for temporary or chronic sensitive skin conditions such as rosacea, psoriasis, eczema or seborrheic dermatitis. This performance treatment may be used as a stand alone treatment. You may schedule treatments twice a week for 3 weeks for optimal healthy skin results. Incorporate our Oxygen Infusion sensitive with other treatments such as, microdermabrasion, enzymes, ultra skin scrubber or pro radiance peel.

Oxygen Infusion sensitive is for “All Skin Types” or with conditions that are prone to redness, inflamed skin conditions, oily-sensitive, telangiectasia, hormonal breakouts, rosacea, eczema, psoriasis or seborrheic dermatitis.

Professional Treatment Application Use

These are the Skin for Life steps when using Oxygen Infusion sensitive as a primary skin care product for a skin treatment.

- Apply 7.5 ml/ 1 ½ teaspoon on dry skin after an exfoliation application. Apply an even medium-thick application to face, neck and décolleté with a facial mask brush. Avoid eye area. Please Refer to Treatment Protocol Below. Proceed with skin care treatment steps.

Additional Methods To Use With A Treatment:

- May use after Microdermabrasion, Enzyme Exfoliant papaya complex, Ultra Skin Scrubber or Pro Radiance Peel.
- May use before Microcurrent application to increase skin flexibility and muscle activity. Skin for Life recommends evaluating skin sensitivity before performing microcurrent.

May Remove Oxygen sensitive with the following:

- Moistened Room Temperature Towel(s)
- Moistened Compressed Sponges



Related Skin Conditions

- Dehydration
- Dry skin
- Rosacea
- Eczema
- Psoriasis
- Hormonal breakouts
- Seborrheic dermatitis

Product Recommendations:

- Gentle Gel Cleanser soothing aloe
- Instant Soothing Toner natural actives
- Vita C Peptide Serum + LSS™ delivery
- Vital Recovery Concentrate botanical lipids + LSS™ delivery
- SOL defense SPF 30 Sunscreen

OXYGEN INFUSION

sensitive + LSS™ delivery phase 1

Professional Protocol Instructions

pH3.5

TREATMENT PREPARATION STEPS

- Make sure skin is thoroughly cleansed. Dry well.
- Proceed with an “Exfoliation Application”. Use skin care products or machine application.
- Remove “Exfoliation Application” per treatment instructions.
- Apply Instant Soothing Toner natural actives.
- Dry skin thoroughly.
- Proceed with Oxygen Infusion sensitive protocol application below.

OXYGEN INFUSION BRIGHTENING APPLICATION

- Apply an even medium-thick application to face, neck and décolleté with a facial mask brush.
- Use light effleurage massage movements. Massage for 1-2 minutes. This will excite the skin’s receptivity. Do Not Remove.
- Pour 5 ml/ 1 teaspoon of Oxygen Infusion activator phase 2 into an airbrush applicator cup.
- Start with airbrush movements. Use small to medium circular movements over the Oxygen Infusion sensitive phase 1.
- Make at least 3 passes while manipulating the Oxygen Infusion sensitive with finger tips. This will ensure a thorough application.
- Once completed, massage for another 1-2 minutes using light effleurage massage movements.
- Remove with moistened room temperature towel(s) or compressed sponges.
- Follow with Instant Soothing Toner natural actives.
- Proceed with skin care treatment steps.

NOTE

Oxygen Infusion sensitive

- May be used in a series of 6 - 12 treatments for optimal skin change.
- May be used in conjunction with other skin care treatments for immediate skin results.

OXYGEN INFUSION

activator phase 2

Professional Product Instructions

pH 9.0

Professional Product Information

Oxygen activator is an important step when interacting with the enzymatic properties of the stratum corneum layer.

Oxygen Infusion activator is essential when using one of the four Oxygen Infusion Gels. Oxygen Infusion activator is never recommended to use alone. Only use Oxygen activator with A, C, E complex, antibacterial, brightening or sensitive oxygen gel formulas.

Oxygen Infusion activator is for “All Skin Types”, “All Skin Conditions” and “All Skin Colors”.

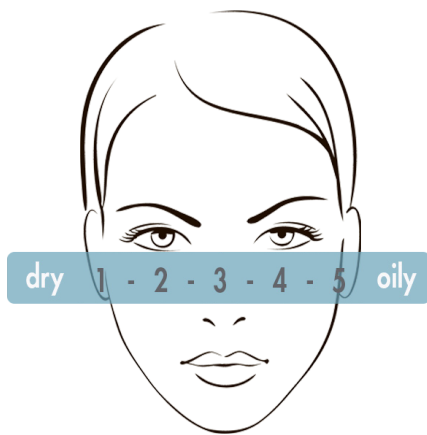
Professional Treatment Application Use

These are the Skin for Life steps when using Oxygen Infusion activator as an adjunct with the Oxygen Infusion Gels phase 1 as a primary skin care product for a skin treatment.

- Use 5 ml/ 1 teaspoon. Pour into an airbrush applicator cup. Please Refer to Treatment Protocol Below. Proceed with skin care treatment steps.

May Remove Oxygen activator phase 2 + Oxygen Infusion phase 1 with the following:

- Moistened Room Temperature Towel(s)
- Moistened Compressed Sponges



Related Skin Conditions

- All Skin Conditions

Product Recommendations:

- Appropriate Skin for Life Cleanser
- Appropriate Skin for Life Toner
- Appropriate Skin for Life Serum(s)
- Appropriate Skin for Life Moisturizer(s)
- Appropriate Skin for Life Physical Sunscreen

OXYGEN INFUSION

activator phase 2

Professional Protocol Instructions

pH9.0

TREATMENT PREPARATION STEPS

- Make sure skin is thoroughly cleansed. Dry well.
- Proceed with an “Exfoliation Application”. Use skin care products or machine application.
- Remove “Exfoliation Application” per treatment instructions.
- Apply Instant Soothing Toner natural actives.
- Dry skin thoroughly.
- Proceed with Oxygen Infusion Protocol Application below.

OXYGEN INFUSION ACTIVATOR APPLICATION

- Apply an even medium-thick application of one of the four Oxygen Infusion Gels phase 1 to face, neck and décolleté with a facial mask brush.
- Use effleurage, petrissage or lifting massage movements. Massage for 1-2 minutes. This will excite the skin’s receptivity. Do Not Remove.
- Pour 5 ml/ 1 teaspoon of Oxygen Infusion activator phase 2 into an airbrush applicator cup.
- Start with airbrush movements. Use small to medium circular movements over the Oxygen Infusion Gel phase 1.
- Make at least 3 passes while manipulating the Oxygen Infusion Gel phase 1 with finger tips. This will ensure a thorough application.
- Once completed, massage for another 1-2 minutes using effleurage, petrissage or lifting massage movements.
- Remove with moistened room temperature towel(s) or compressed sponges.
- Follow with Instant Soothing Toner natural actives.
- Proceed with skin care treatment steps.

NOTE

Oxygen Infusion activator phase 2 + Oxygen Infusion Gel phase 1

- May be used in a series of 6 - 12 treatments for optimal skin change.
- May be used in conjunction with other skin care treatments for immediate skin results.

REVITALIZING MINT MASK

purifying camphor + LSS™ delivery

Professional Product Instructions

pH5.5

Professional Product Information

Revitalizing Mint Mask is a light-weight cooling gel mask. Perfect blend of camphor, peppermint and green algae “Spirulina” to awake the skin senses.

Revitalizing Mint Mask may be used as a final mask treatment step or as an exfoliation to soften follicular congested skin. Spirulina is a powerful vitamin and mineral skin supplement which assists the skin with nutritional health.

Revitalizing Mint Mask is for “All Skin Types” or with conditions that are prone to oily, acne, follicular congestion, photo-aging, or facial rhytides (wrinkles).

Professional Treatment Application Use

These are the Skin for Life steps when using Revitalizing Mint Mask as a primary skin care product for a skin treatment.

- Apply 15 ml/ 1 tablespoon over Skin for Life serum(s) and moisturizer(s) as a finishing mask. Apply an even application to face, neck and décolleté with a facial mask brush. Avoid eye area. Leave mask on for 5-7 minutes.

Additional Methods To Use With A Treatment:

- May use with Steam for 3-5 minutes to soften skin before extractions.

May Remove Revitalizing Mint Mask with the following:

- Moistened Room Temperature Towel(s)
- Moistened Compressed Sponges
- Moistened Esthetic Gauze



Related Skin Conditions

- Dry skin
- Combination skin
- Sensitive skin
- Oily skin
- Seborrhea
- Acne prone skin
- Facial rhytides (wrinkles)
- Photo-aging

Product Recommendations:

- Gentle Gel Cleanser soothing aloe
- Salicylic Toner eucalyptus oil
- Moisture Booster hyaluronic acid + LSS™ delivery
- Vita C Peptide Serum + LSS™ delivery
- Antibac Essentials lysozyme protection + LSS™ delivery
- Vital Recovery Concentrate botanical lipids + LSS™ delivery
- Vita A Lift proscience technology

CRYOALGAE MASK + CRYOALGAE BOOSTER

peel off mask + mask activator

Professional Product Instructions

Professional Product Information

CryoAlgae Mask + CryoAlgae Booster brings a real feeling of freshness and softness to the skin. Our plant active ingredients with purifying and antioxidant properties stimulate, regenerate and invigorate the skin's performance.

Spirulina powder provides skin with a multi-vitamin nutritional supplement for skin health. Peppermint oil is revitalizing, invigorating and cooling with a fresh, strong mint scent that is energizing and uplifting.

CryoAlgae Mask + Booster is for "All Skin Types" or with conditions that are prone to sensitivities, rosacea, inflamed acne, telangiectasia, seborrheic dermatitis, wrinkles, fine lines, sagging skin, lack of collagen support, hyper-pigmentation, melasma, chloasma or facial demarcation lines.

Professional Treatment Application Use

These are the Skin for Life steps when using Anti Pollution Mask as a primary skin care product for a skin treatment.

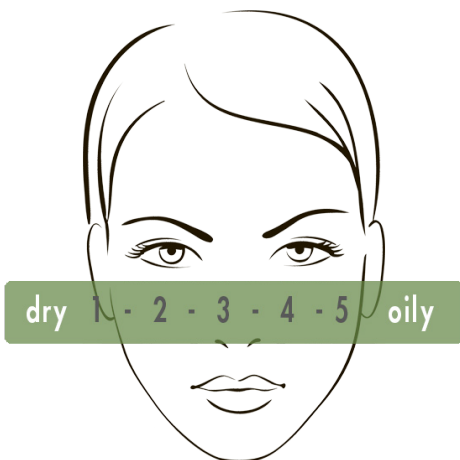
- Use 1 sachet (CryoAlgae Mask) and 1 sachet (CryoAlgae Booster) for face. Use 2 sachets of each for face and neck. CryoAlgae Mask + Booster is used as the final mask treatment step. Please refer to Treatment Protocol below. Proceed with skin care treatment steps.

Additional Methods To Use With A Treatment:

- May use after Microdermabrasion, Ultra Skin Scrubber, Dermaplaning, Microcurrent, Pro Radiance Peel, Professional Peel System or Oxygen Infusion Treatment.

CryoAlgae Mask + CryoAlgae Booster is a peel off mask. May remove mask residue with the following:

- Moistened Room Temperature Towel(s)
- Moistened Compressed Sponges
- Moistened Esthetic Gauze



Related Skin Conditions

- Dry skin
- Dehydration
- Sensitive skin
- Combination skin
- Melasma
- Chloasma
- Rosacea
- Seborrheic Dermatitis

Product Recommendations:

- Gentle Gel Cleanser soothing aloe
- Instant Soothing Toner natural actives
- Vita C Peptide Serum + LSS™ delivery
- Vita A + C advanced proscience
- Moisture Complex nourishing peptides + LSS™ delivery
- Ultra Performing Complex vitamins A, C, E + LSS™ delivery

CRYOALGAE MASK + CRYOALGAE BOOSTER

peel off mask + mask activator

Professional Protocol Instructions

TREATMENT PREPARATION STEPS

- Make sure skin is thoroughly cleansed. Dry well.
- Proceed with an “Exfoliation Application”. Use skin care products or machine application.
- Remove “Exfoliation Application” per treatment instructions.
- Apply Instant Soothing Toner natural actives or Salicylic Toner eucalyptus oil.
- Apply appropriate Skin for Life Serum(s) and Moisturizer(s).
- Massage if appropriate or perform lymphatic drainage.
- Proceed with CryoAlgae Mask + CryoAlgae Booster Protocol Instructions.

CRYOALGAE MASK + CRYOALGAE BOOSTER PEEL OFF PROTOCOL APPLICATION

- Once treatment is at its final mask application proceed with the following steps:
- Pour content of CryoAlgae Mask sachet into a “glass or stainless steel bowl”.
- Pour content of CryoAlgae booster into the same bowl.
- Mix quickly together with a plastic spatula until a creamy consistency.
- Saturate cotton round with Instant Soothing Toner. Place over the eyes for a hydrating and cooling effect. Spread CryoAlgae Mask + CryoAlgae Booster onto skin immediately. Apply over the eye area for an “Advanced Eye Treatment”. *Advanced Eye Treatment is optional.*
- Mask setting time is within 10 minutes.
- Once setting time is completed, start at the ends of the mask and lift with fingers to remove and slowly peel off.
- Remove mask residue with room temperature towel(s) or compressed sponges.
- Apply Instant Soothing Toner natural actives.
- Complete treatment with Skin for Life Serum(s) and Moisturizer(s).

NOTE

CRYOALGAE MASK + CRYOALGAE BOOSTER is for all skin types, conditions and colors.

ANTI POLLUTION MASK

peel off mask – charcoal

Professional Protocol Instructions

Professional Product Information

Anti Pollution clarifies and detoxifies skin from impurities. Replenishes skin's minerals and vitamins.

Our charcoal mask balances oily, combination and troubled skin. Tightens and delivers a clearer skin complexion with glowing radiance.

Anti Pollution Mask is for “Combination or Oily Skin Types” or with conditions that are prone to acne, follicular congestion, cyst, nodular cyst, pustules, papules or open and closed comedones.

Professional Treatment Application Use

These are the Skin for Life steps when using Anti Pollution Mask as a primary skin care product for a skin treatment.

- Use 1 sachet for face. Use 2 sachets for face and neck. Anti Pollution Mask is used as the final mask treatment step. Please Refer to Treatment Protocol Below. Proceed with skin care treatment steps.

Additional Methods To Use With A Treatment:

- May use after Microdermabrasion, Ultra Skin Scrubber or Dermaplaning.

Anti Pollution Mask is a peel off mask. May remove mask residue with the following:

- Moistened Room Temperature Towel(s)
- Moistened Compressed Sponges
- Moistened Esthetic Gauze



Related Skin Conditions

- Combination skin
- Oily skin
- Acne or acne scarring
- Follicular congestion
- Nodular cyst
- Hormonal acne

Product Recommendations:

- Salicylic Gel Cleanser clarifying solution
- Salicylic Toner eucalyptus oil
- Renewal Serum 10% lactic concentrate + LSS™ delivery
- Moisture Booster hyaluronic acid + LSS™ delivery
- Antibac Essentials lysozyme protection + LSS™ delivery
- SOL defense SPF 30 physical sunscreen

ANTI POLLUTION MASK

peel off mask – charcoal

Professional Protocol Instructions

TREATMENT PREPARATION STEPS

- Make sure skin is thoroughly cleansed. Dry well.
- Proceed with an “Exfoliation Application”. Use skin care products or machine application.
- Remove “Exfoliation Application” per treatment instructions.
- Apply Instant Soothing Toner natural actives or Salicylic Toner eucalyptus oil.
- Apply appropriate Skin for Life Serum(s) and Moisturizer(s).
- Massage if appropriate or perform lymphatic drainage.
- Proceed with Anti Pollution Mask Protocol steps.

ANTI POLLUTION MASK PEEL OFF PROTOCOL APPLICATION

- Once treatment is at its final mask application proceed with the following steps:
- Pour content of sachet into a “glass or stainless steel bowl”.
- Pour 100ml of cool tap water into the bowl.
- Mix quickly together with a plastic spatula until a creamy consistency.
- Spread Anti Pollution Mask onto skin immediately. Avoid eye area.
- Mask setting time is within 10 minutes.
- Once setting time is completed start at the ends of the mask and lift with fingers to remove and slowly peel off.
- Remove mask residue with room temperature towel(s) or compressed sponges.
- Apply Instant Soothing Toner natural actives.
- Complete treatment with Skin for Life Serum(s) and Moisturizer(s).

NOTE

ANTI POLLUTION MASK is not for sensitive skins.



www.skinforlife.com • sales@skinforlife.com • (866) 312.7546



Follow Us • Share US • Contact US